

SIZE M ONLY

Omit outermost yo at side seam because there aren't enough sts for the complete lace motif; work those sts in stockinette instead.

ALL SIZES

Work in patt as established until piece measures 4½" (11.5 cm) from CO, ending after a WS row.

NEXT ROW: (RS; dec row) K1, k2tog, work in patt to last st, k1—I st dec'd. Work in patt and *at the same time* rep dec row when piece measures 5½" (14 cm) from CO—50 (53, 55, 58) sts rem.

Cont in patt until piece measures 8" (20 cm) from CO, ending after a WS row.

NEXT ROW: (RS; inc row) K1, M1, work in patt to last st, k1—I st inc'd.

Work in patt and *at the same time* rep inc row when piece measures 10¼", 12¾", and 15" (26, 32, and 38 cm) from CO—54 (57, 59, 62) sts.

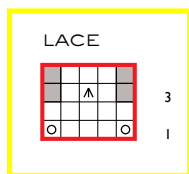
Work even in patt until piece measures 15 (15½, 15¾, 16¼)" (38 [39, 40, 41] cm) from CO.

SHAPE ARMHOLE AND NECK

Cont in patt as established, shape armhole by binding off as foll: BO at armhole edge (beg of RS row) 3 sts 1 (1, 2, 2) time(s), 2 sts 3 (4, 3, 3) times, 1 st 3 (2, 2, 3) times—42 (44, 45, 47) sts rem.

Work in patt until armhole measures 4¾ (5¼, 5½, 6)" (12 [13, 14, 15] cm), ending after a RS row.

NEXT ROW: (WS) BO 12 (13, 13, 14) sts (neck edge), work in patt to end.



- Knit on RS; purl on WS
- Purl on RS; knit on WS
- Yarnover
- Yarnover *except for 38½" (98 cm) work in St st to maintain stitch count*
- Sl 2 as if to k2tog, k1, p2sso
- Knit into front, back, front of same st
- K3tog
- Sl 1, k2tog, pssso
- Bobble: (K1, p1, k1, p1, k1) into the same st (5 sts), turn, p5, turn, sl 5 sts pwise to right needle, pass sts 2, 3, 4, 5 one at a time over st 1, knit st 1 tbl—1 st rem.
- K2tog
- Ssk
- Sl 2 sts onto cn, hold in front, k2, k2 from cn
- Sl 2 sts onto cn, hold in back, k2, k2 from cn
- No stitch
- Pattern repeat

