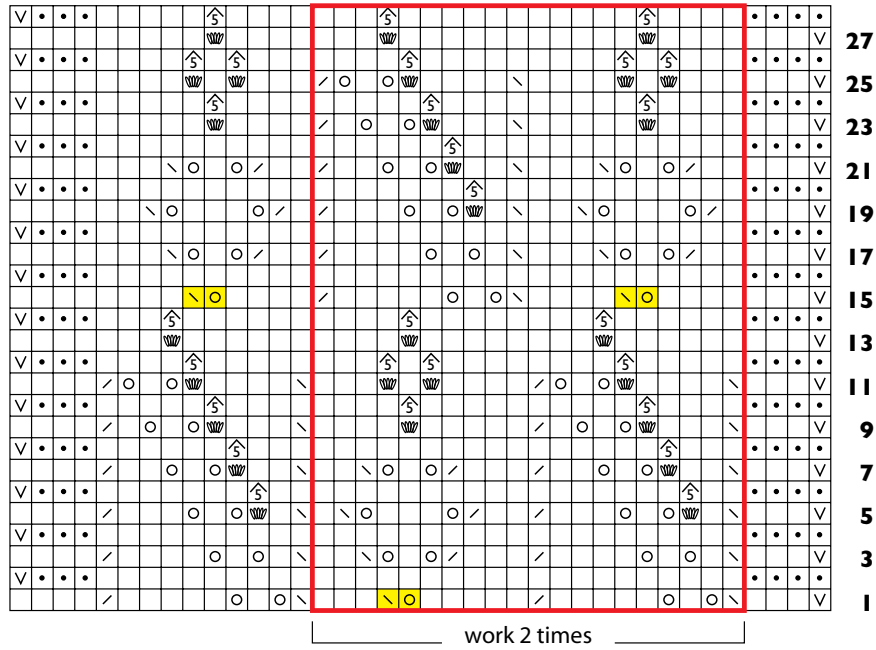


Lily and Small Flower Center



- k on RS; p on WS
- p on RS; k on WS
- yo
- k2tog
- sl 1, k1, pss0
- sl 2 as if to k2tog, k1, p2sso
- 5-st nupp (see Stitch Guide)
- p5tog
- sl 1 (see instructions)
- pattern repeat

Lily Lace Edge

