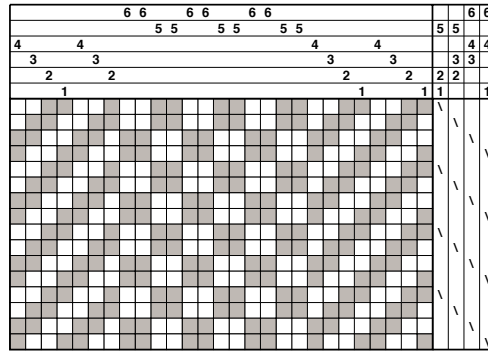
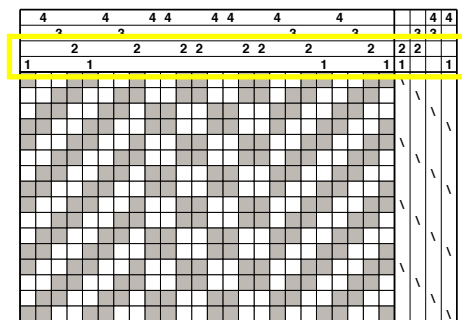


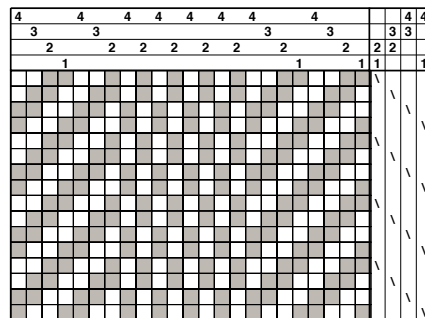
**11.6a** Basket weave stripe in a 2/2 twill ground. Notice that there is a clean break where the two structures meet. Draft 6b shows a more economical way to weave this cloth.



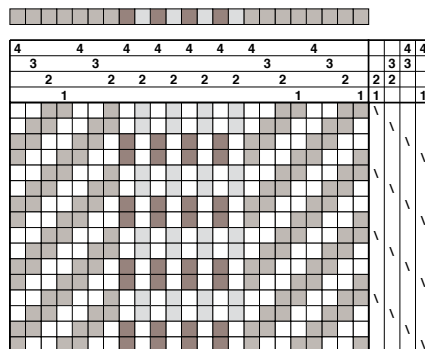
**11.6b** Basket weave stripe in a 2/2 twill ground. Notice that there is a clean break where the two structures meet. The threading is altered by deleting an end threaded on shaft 1 at the beginning of the twill area to maintain the break.



**11.7a** Rib stripe in a 2/2 twill ground. Clean breaks are maintained.



**11.7b** Rib stripe in a 2/2 twill ground. Clean breaks are maintained. The alternation of colors in the warp where the rib is threaded creates an interesting effect in the cloth.



Drafts **11.3** and **11.4** combine plain weave with warp-faced twill stripes. Draft **11.3** combines plain weave with a 2/1 twill; draft **11.4** combines plain weave with a 3/1 twill. There cannot be a clean break between the plain-weave and 2/1 twill. For both, the sett must be more dense in the twill areas to maintain the same firmness throughout the cloth.

Draft **11.5** combines plain weave with a 2/2 basket weave. The basket weave repeats in four picks and the plain weave in two, and so it is impossible to maintain a clean break between the two areas. The weft goes over or under three ends at a time where the plain weave and basket meet. There is no way to avoid producing these floats.

To maintain a clean break, we can combine two structures that each repeat in four picks, such as a 2/2 twill and 2/2 basket weave (**11.6a** and **11.6b**). In **11.6a**, we have simply added two shafts to the four required for the twill to make the basket. So far in this book, that is the way that this kind of draft has been constructed, but in this particular case, it is possible to write the draft more economically: in **11.6b**, four shafts and four treadles are used to weave both structures at once. The sett is the same for 2/2 basket weave and for 2/2 twill, which makes sleying the cloth easier because it isn't necessary to keep track of the threading at the same time.

Clean breaks are also maintained with the combination of 2/2 twill and the rib shown in **11.7a** and **11.7b**. Four shafts and four treadles are required for this structure. Although the sett formula (see Appendix C) suggests that the sett for the rib be the same as that for plain weave, I would set it the same as the twill surrounding it so that the rib will be more warp-faced. If the rib