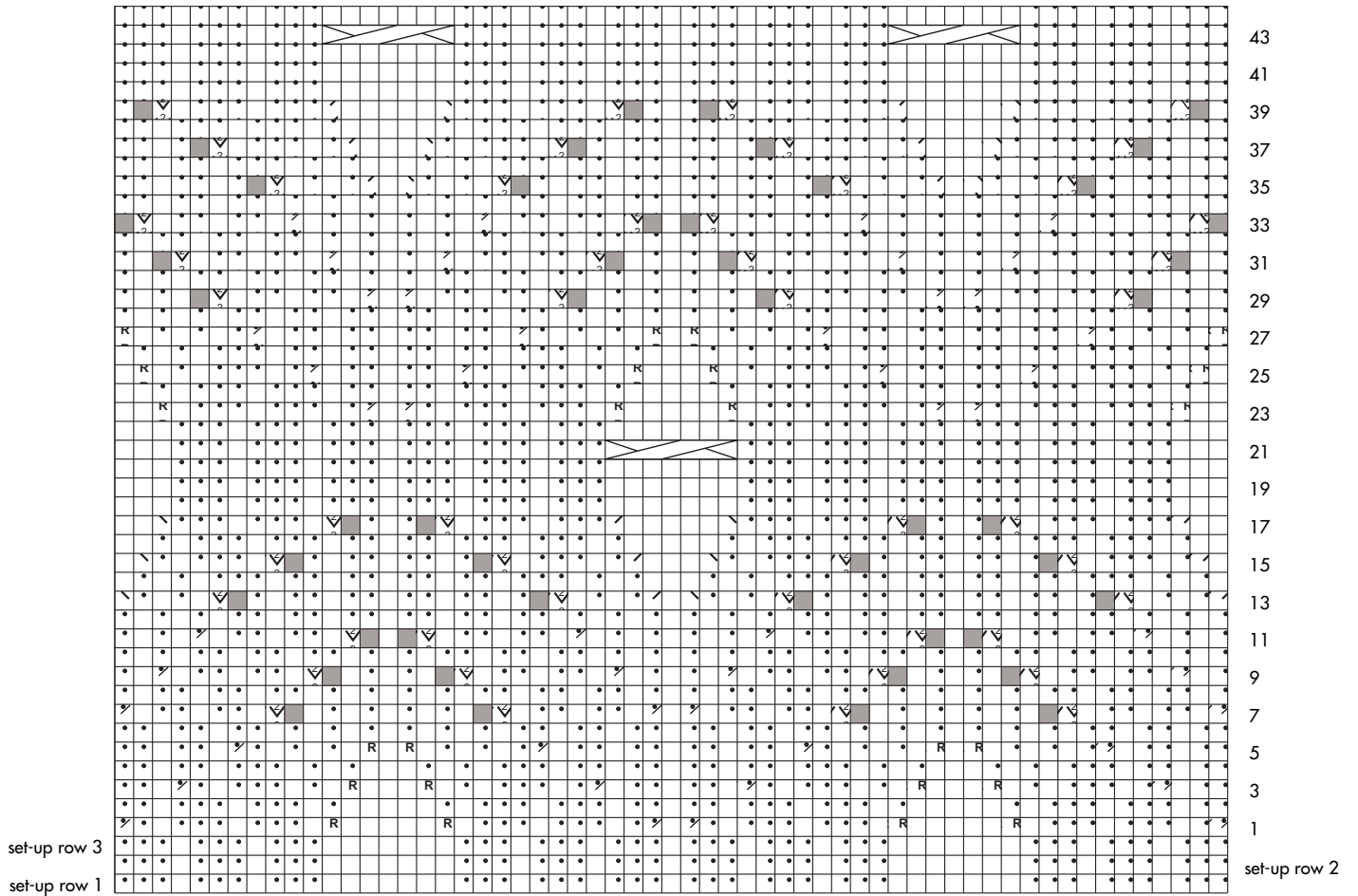











# Balloon Stitch



-  k on RS; p on WS
-  p on RS; k on WS
-  k2tog
-  ssk
-  p2tog
-  (p1, p1tbl) in same st to inc 1 st
-  R M1R to inc 1 st (see Stitch Guide)
-  no stitch

 3/4RC: sl 4 sts onto cn and hold in back, k3, k4 from cn