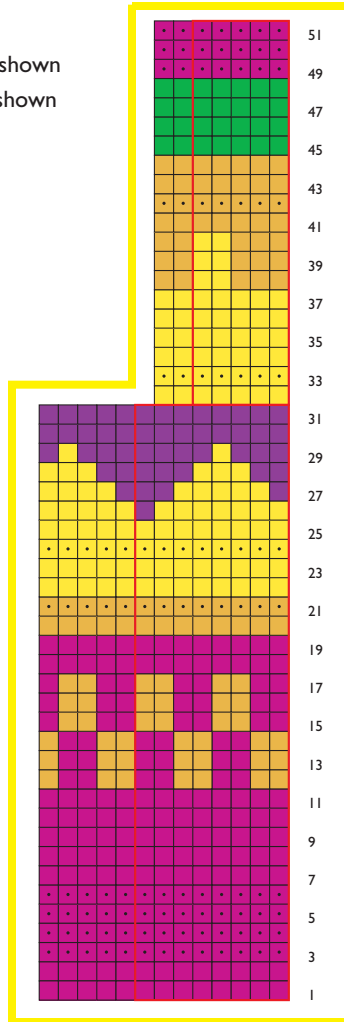
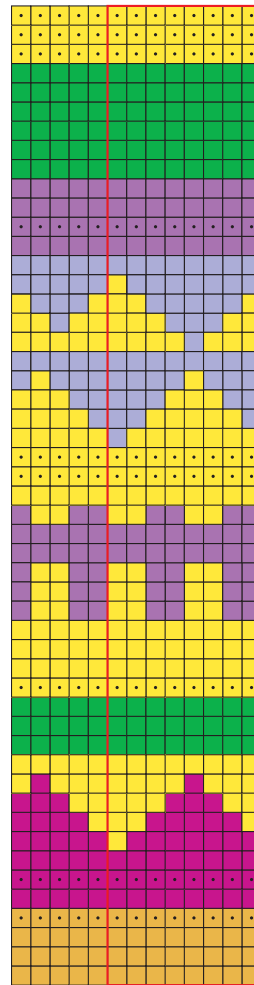


- Knit on RS; purl on WS in color as shown
- Purl on RS; knit on WS in color as shown
- Saffron
- Autumn Harvest
- Indian Summer
- Bordeaux
- Berry Patch
- Fern Glen
- Pattern repeat

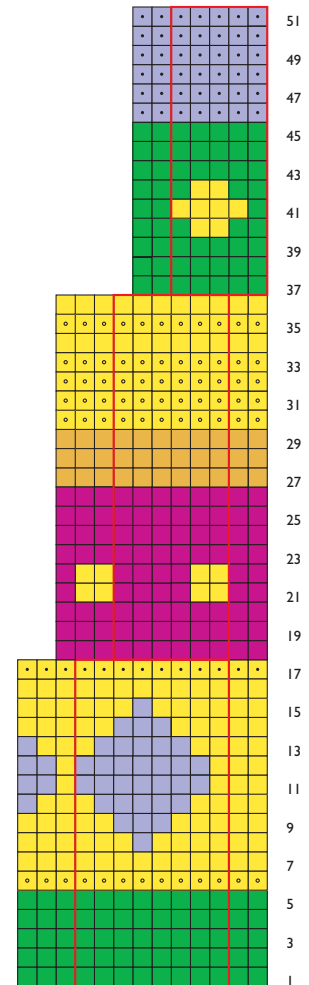
Left Front Bodice (not including edging)



Left Back



Right Back



### 1 Determine Gauge

Work as for the Up-and-Down Classic Crew (page 17).

### 2 Determine Bodice Circumference and Length

Work as for the Up-and-Down Classic Crew (page 17).

### 3 Determine Stitch Count

Work as for the Side-to-Side Classic Crew (page 31).

### 4 Knit the Bodice Back

Work as for the Side-to-Side Classic Crew (page 31), but use a provisional cast-on (Glossary, page 134) at the center back and work each half to the side seam, following the charts for color pattern. Do NOT bind off the stitches.