

Borders and Edgings

Row 5: K1, *p3, M1, k1; rep from *.

Row 7: K1, *p4, M1, k1; rep from *.

Row 9: K1, *p5, M1, k1; rep from *.

For a contrasting edge, BO in knit with CC.

Note: Without the ribbing, Rows 1–10 of this edging can be worked directly onto a piece, or the edging can be worked separately and then sewn to a finished piece.

1x1 and Spiral Rib

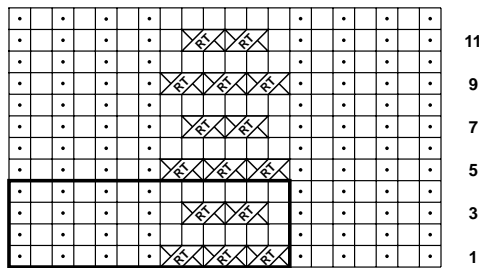
(multiple of 13 sts + 7)

Row 1: (RS) P1, [k1, p1] 3 times, *[k2tog, then knit first st again] 3 times, [p1, k1] 3 times, p1; rep from *.

Rows 2 and 4: Knit the knits and purl the purls.

Row 3: [P1, k1] 4 times, *[k2tog, then knit first st again] 2 times, [k1, p1] 4 times, **k1**; rep from *.

Rep Rows 1–4 for desired length.



1x1 Woven Diamond Rib

(multiple of 19 sts + 3)

Work all knit sts through back loop on RS; work all purl sts through back loop on WS. Work all cables in reverse on the back, i.e., 1/1RC is worked as 2 knit sts on the front of work and as 2 purl sts on back of work. The direction (either right or left) that the sts move remains the same.

Rows 1, 3, 5, 19, 21, and 23: (RS) P1, [k1b] 3 times, *[p1, k1b] 2 times, p2, k2tog then knit the first st again, p2, [k1b, p1] 2 times, [k1b] 5 times; rep from *, end last rep [k1b] 3 times, p1.

Rows 2, 4, 6, 18, 20, and 22: Knit the knits; purl the purls through the back loops.