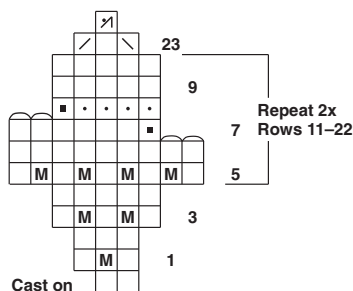


Appliqué

Rows 9 and 15: Knit.

Row 17: Ssk, k1, k2tog—3 sts.

Row 18: P3tog—1 st. Fasten off.



Large: CO 2 sts.

Row 1: K1, M1, k1—3 sts.

Rows 2, 4, 6, 10, 12, 16, 18, and 22: Purl.

Row 3: K1, [M1, k1] 2 times—5 sts.

Rows 5, 11, and 17: K1, [M1, k1] 4 times—9 sts.

Row 7, 13, and 19: BO 2 sts, k6—7 sts.

Row 8, 14, and 20: BO 2 sts, k4—5 sts.

Row 9, 15, and 21: Knit.

Row 23: Ssk, k1, k2tog—3 sts.

Row 24: P3tog—1 st. Fasten off.

Elm Leaf with Vertical Eyelets

Knit-cord (page 149)

CO 5 sts. Work St st for 4 rows.

Row 1: (RS) K1f&b, k1, yo, k1, yo, k1, k1f&b—9 sts.

Row 2: P9.

Rows 3 and 9: K4, yo, k1, yo, k4—11 sts.

Row 4 and all even-numbered rows except 8, 14, and 20: Purl.

Rows 5 and 11: K5, yo, k1, yo, k5—13 sts.

Rows 7 and 13: BO 3 sts, k2, yo, k1, yo, k6—12 sts.

Rows 8 and 14: BO 3 sts, p8—9 sts.

Row 15: K4, yo, k1, yo, k4—11 sts.

Row 17: K5, yo, k1, yo, k5—13 sts.

Row 19: BO 3 sts, k9—10 sts.

