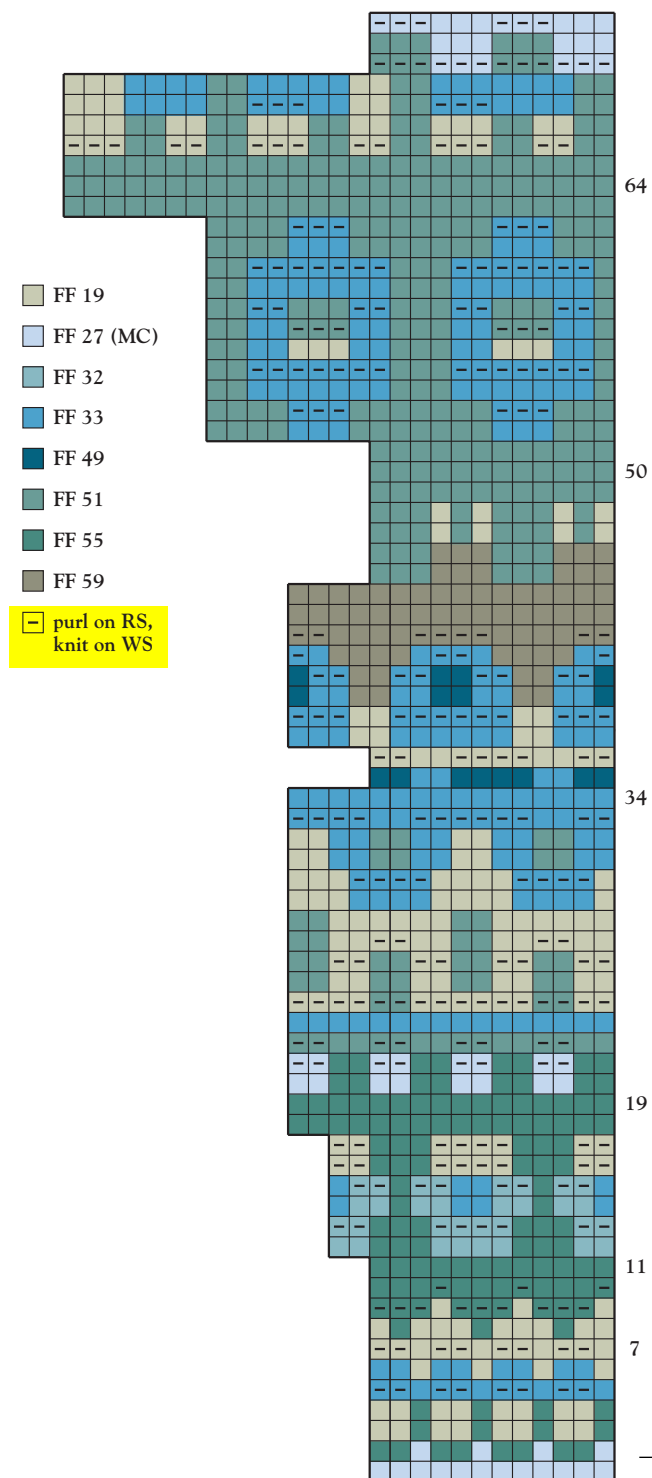


THE BLUE SHIMMER



**CAP**

Rnd 7: inc 2 sts: 164 sts.  
 Rnd 11: inc 4 sts: 168 sts.  
 Rnd 50: inc 2 sts: 170 sts.  
 Rnd 64: dec 8 sts: 162 sts.

**PULLOVER AND CARDIGAN**

Rnd 11: inc 73 sts: 217 sts.  
 Rnd 19: dec 1 st: 216 sts.  
 Rnd 34: inc 72 (84, 108) sts: 288 (300, 324) sts.  
 Rnd 37: inc 0 (4, 4) sts: 288 (304, 328) sts.  
 Rnd 43: dec 0 (4, 4) sts: 288 (300, 328) sts.  
 Rnd 50: inc 72 (100, 106) sts: 360 (400, 430) sts.  
 Rnd 64: inc 18 (5, 2) sts: 378 (405, 432) sts.

**JACKET**

Work even in pattern repeat as given.