

Knit Quilt-Block Greeting Cards

ANN BUDD

Next time you need a special greeting card, knit your own! I browsed through my knitting books and came up with three motifs that resemble traditional quilt blocks. Use them for friendship, new baby, birthday, or Valentine cards or make a miniature knitted quilt. The heart motif is modified from one in *Nicky Epstein's Knitted Embellishments* (Interweave Press, 1999); the star motif is from the Star Light Star Bright baby blanket project featured in the Winter 1999/2000 issue of *Interweave Knits*; the snowflake motif is a traditional Russian lace pattern from *Gossamer Webs* by Galina Khmeleva and Carol R. Noble (Interweave Press, 1998).



Ann Budd's knitted quilt-block greeting cards: (left to right) the star, the snowflake, and the heart. Photograph by Joe Coca.

HEART MOTIF

With lavender, CO 29 sts. Work Rows 1–30 of Heart chart. BO all sts. Do not cut yarn. With crochet hook and RS facing, beginning with last st of BO where yarn is already attached, work wide picots around all four edges as foll: *Work 1 sc in each of next 2 sts, ch5, sk3 sts; rep from *, working 3 sc all in same st at each corner. Fasten off. Weave in loose ends. Spray lightly with water and block flat. Thread lavender ribbon in a tapestry needle and whipstitch around the picot edging as shown in the photograph. Secure the ribbon to WS with a dab of glue. Position the swatch on the card and lightly mark the position of 2 eyelets at each corner for attaching the swatch. Thread lavender thread in a tapestry needle, and using the needle to punch holes through the card at the marks, tack each corner of the swatch to the card with a single stitch by bringing the needle from the inside of the card, through the eyelet at one mark from back to front, then through the other marked eyelet from front to back to the inside of the card again. Tie the thread in tiny knots on WS of card.

STAR MOTIF

With chartreuse, CO 31 sts. Work Rows 1–33 of Star chart. BO all sts. Do not cut yarn. With crochet hook and RS facing, beginning with last st of BO where yarn is already attached, work tiny picots around all four edges as foll: *Work 1 sc in each of next 2 sts, ch5, work 1 sl st into next st; rep from *, working 3 sc all in same st at each corner. Fasten off. Weave in loose ends. Spray lightly with water and block flat. Position the swatch on the card and lightly mark the position of 2 eyelets at each corner for attaching the swatch with ribbon ties. Cut a piece of white paper $1\frac{3}{4}$ inches (4.4 cm) square and lightly glue to the card front (so the eyelets will show more clearly), centered between the marks. Place the swatch on the top of the white paper, lining up the eyelets with the marks on the card. Thread chartreuse ribbon in a tapestry needle, and using the needle to punch holes through the card at the marks, tack each corner of the swatch to the card by bringing the needle through the eyelet at one mark from front to back to the inside of the card, then through the other marked eyelet from back to front to the outside of the card again. Tie the ribbons in tiny bows and trim the ends. Secure the ribbon bows with a small dab of glue.

MATERIALS

Presencia Finca Pearl Cotton, 100% cotton thread, size 8, 77 yards (70 m)/10 g ball, 1 ball each of #2687 lavender (heart), #4799 chartreuse (star), and #3305 light blue (snowflake)

Needles, size 0000 (1 mm) or size needed to obtain gauge

Tapestry needle, small-eye

Crochet hook, size 10 (1.3 mm) steel

Silk ribbon in colors matching the thread, $\frac{1}{4}$ inch (3 mm) wide, 1 yard (.9 meter) each

Acid-free white glue

Handmade paper note cards and envelopes in coordinating colors, 3

Finished size: Heart motif, 2 x $2\frac{1}{2}$ inches (5.1 x 6.4 cm); star motif, $2\frac{1}{4}$ x $2\frac{3}{4}$ inches (5.7 x 7.0 cm); snowflake motif, $2\frac{3}{4}$ inches (7.0 cm) square

Gauge: About 13 sts = 1 inch (2.5 cm) in stockinette stitch; exact gauge is not critical for this project but will affect finished dimensions

ABBREVIATIONS

| | |
|---|---|
| BO—bind off | sl—slip |
| ch—crochet chain | sl st—crochet slipstitch |
| CO—cast on | ssk—slip 2 stitches individually knitwise, return them to left needle, then knit them together through their back loops |
| foll—follows | ssp—slip 2 stitches individually knitwise, return them to left needle, then purl them together through their back loops |
| k—knit | st(s)—stitch(es) |
| kwise—as if to knit | tog—together |
| k2tog—knit 2 stitches together | WS—wrong side |
| k3tog—knit 3 stitches together | yo—yarn over |
| p—purl | |
| p2tog—purl 2 stitches together | |
| p2sso—pass 2 slipped stitches over last stitch worked | |
| rep—repeat | |
| RS—right side | |
| sc—single crochet | |
| sk—skip | |

SNOWFLAKE MOTIF

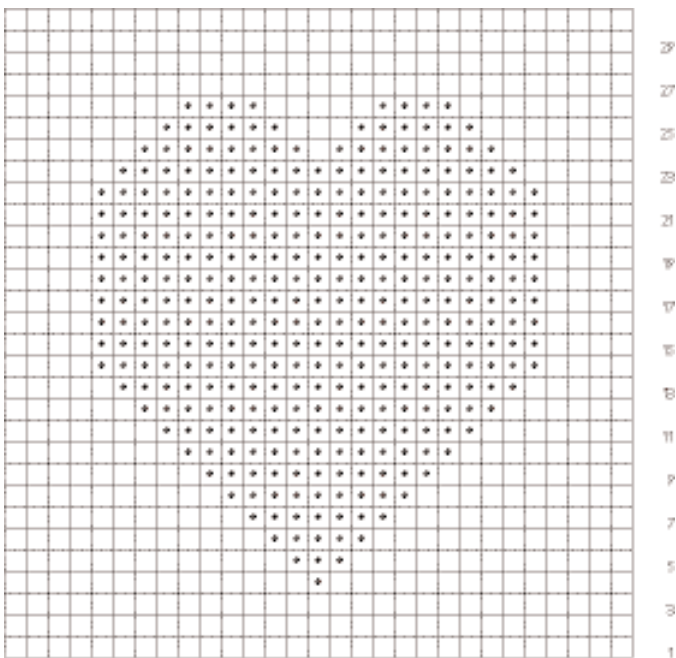
With light blue, CO 31 sts. Work Rows 1–57 of Snowflake chart. BO all sts. Do not cut yarn. With crochet hook and RS facing, beginning with last st of BO where yarn is already attached, work 1 row of sc around all four edges, working 3 sc all in same st at each corner. Then

work a row of picots as foll: *Work 1 sc in each of next 3 sts, ch3, join ch-3 into a loop with a sl st in sc at base of ch; rep from *, again working 3 sc all in same st at each corner. Fasten off. Weave in loose ends. Spray lightly with water and block flat. Position the swatch on the card and lightly mark the corners. Cut a piece of white paper 2¹/₄ inches (5.7 cm) square and lightly glue it to the card front (so eyelets will show more clearly), centered between the marks. Center the swatch on top of the white paper. Thread light blue thread in the tapestry needle, and using the needle to punch holes through the card at the boundary between the knitting and crochet edging, tack each corner

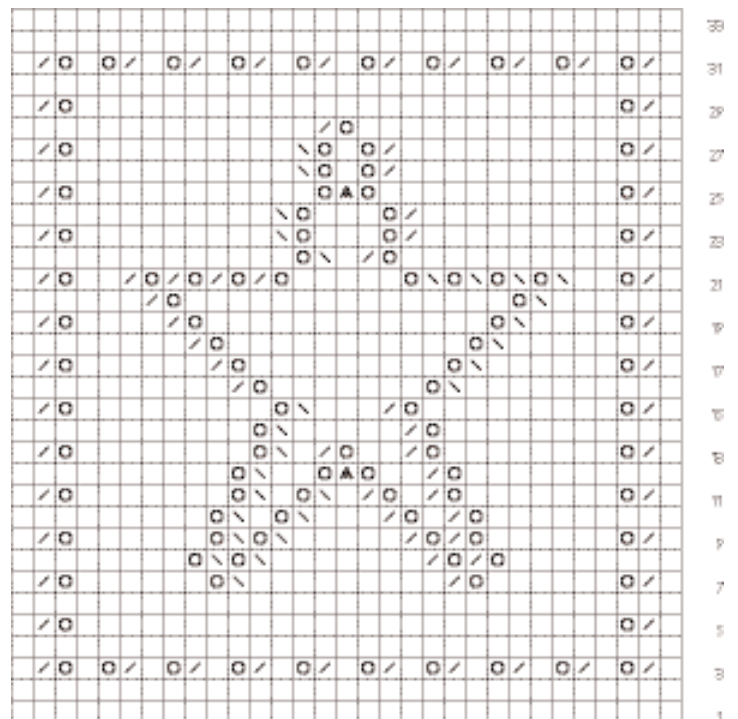
of the swatch to the card with a single stitch by bringing the needle from the inside of the card, through the card and knitting from back to front, then through the knitting and card from front to back to the inside of the card again. Tie the thread in tiny knots on WS of card.

ABOUT THE DESIGNER. *Ann Budd is a book editor for Interweave Press and author of The Knitter's Handy Book of Patterns and The Knitter's Handy Book of Sweater Patterns (Interweave Press, 2002 and 2004, respectively).*

Heart

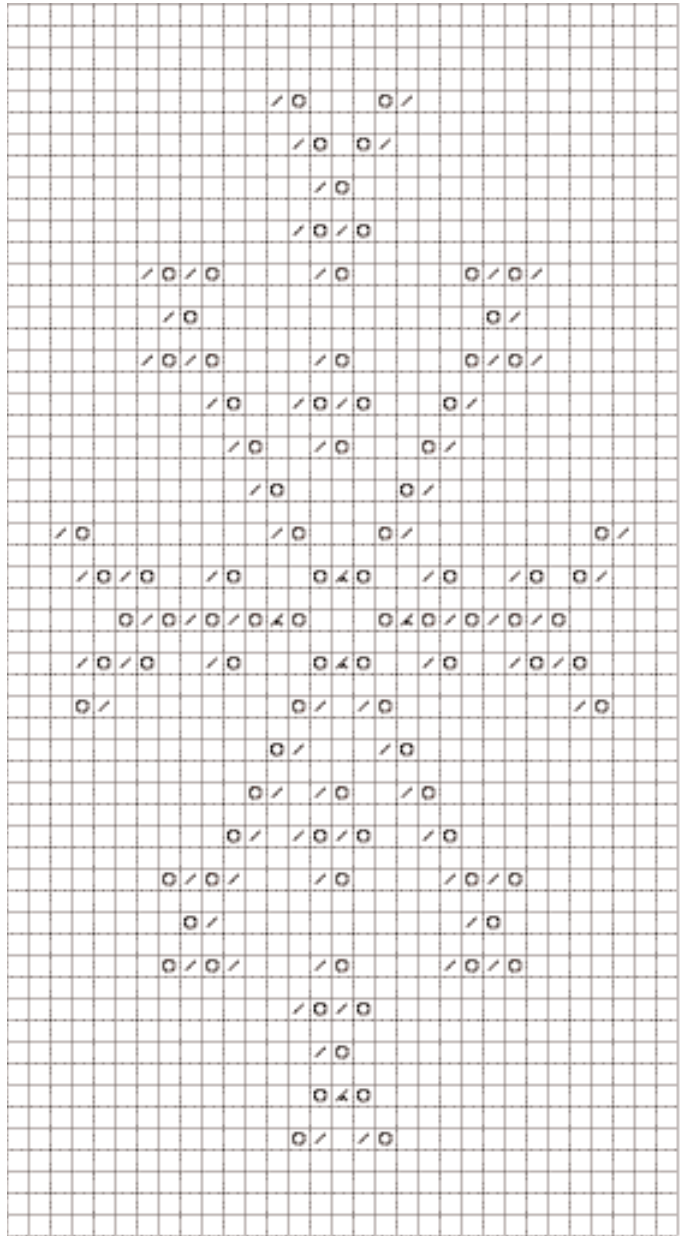


Star



Charts may be photocopied for personal use.

Snowflake



37
36
35
34
33
32
31
30
29
28
27
26
25
24
23
22
21
20
19
18
17
16
15
14
13
12
11
10
9
8
7
6
5
4
3
2
1

Key

- RS: knit; WS: purl
- RS: purl; WS: knit
- RS and WS: yo
- / RS: k2tog; WS: p2tog
- \ RS: ssk; WS: ssp
- ◀ RS: k3tog
- △ RS: sl 2 tog kwise, k1, p2sso;
WS: p1, sl this st to left needle,
pass next 2 sts over it,
sl it back to right needle



RISK-FREE TRIAL OFFER

Discover projects and articles sure to inspire and expand your creative horizons.

From cover to cover, *PieceWork* magazine gives you gorgeous photography, amazing needlework objects, contemporary projects with a historical perspective, and the personal stories of needleworkers from around the globe.

PieceWork magazine also brings you articles on beautiful heirloom-quality projects, and the personal stories and memories behind timeless pieces of handwork. Don't miss out on another issue. Take advantage of this special **risk-free** offer today!

Call (800) 340-7496 code JPDP6, or go to www.interweave.com/go/pwkJPDP6