

# Fulled Wool Scarves

## multiple projects on the same threading

MADELYN VAN DER HOOGT

*Choose from a fabulous array of colors and make lots of scarves for quick and easy holiday gifts. Change weft colors for different looks on the same warp—or change the colors of the warp, too! Simply tie a new warp onto the one you’ve just finished. The setts of both the warp and the weft in this project are very open to allow maximum fulling to take place during wet finishing. The result is a wonderfully soft, thick, cuddly, warm winter scarf.*

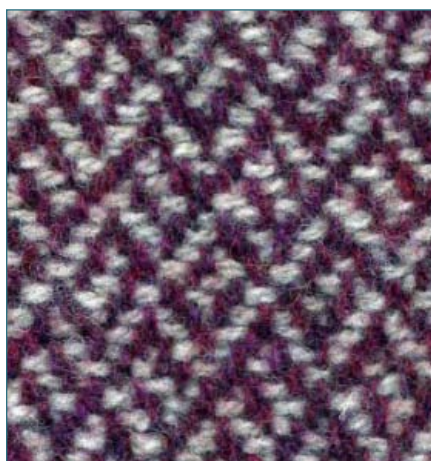
**T**hese two scarves were woven on different warps, both of Harrisville Shetland, one in Garnet, the other in Peacock. Both yarns are somewhat “heathered” (flecks of other colors are spun into the yarn), a quality that makes them work well with a variety of weft colors. You can choose to weave many scarves on one very long warp or even tie on new warps to change scarf colors completely. Whatever you choose, you’ll find the weaving easy and fun.

### Tying on warps

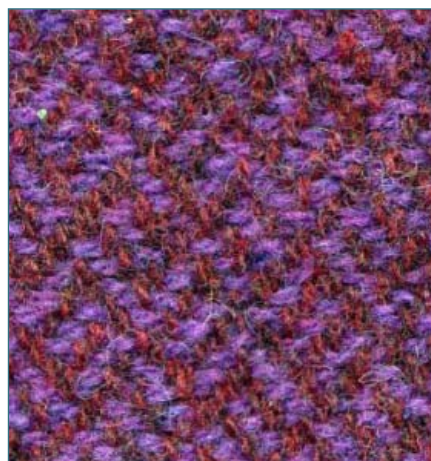
You might think it would be a time-consuming process to tie a new warp to an old one, thread by thread. There are only eighty-two threads in this warp, however, so it takes very little time—much less than it would take to sley and thread anew. For complete steps and photos of the process of tying on a new warp, see Beginner’s Corner, *Handwoven*, November/December 2007, pages 14–15.

The basic process is first to wind the new warp with the same number of ends as the one you will tie it to. Check the number carefully. If at the end of tying on you have any ends left over, you will know you’ve missed some and can correct your error.

Cut the loops at the ends of the new warp and remove it from the warping board. Place lease sticks in the cross and



**a. A Garnet warp works well with many different weft colors, each producing a unique overall color effect.**



**b. A weft color close in hue to the warp color makes the design more subtle but gives a rich blend of the two colors.**

secure them in front of the reed.

Then, taking the first end of the old warp and the first end of the new warp on one side (right side if you are right handed, left side if you are left-handed), tie them together in an overhand knot. Repeat with the next end from each warp and continue until all ends are tied. The knots do not have to be exactly at the same point for every tie. Especially with wool, small tension differences between the threads are not a problem.

When the knots are all tied, remove the lease sticks and grab the new warp at a distance from the knots where the chain is undisturbed and pull tightly to straighten all the ends. Begin turning the warp beam until the knots reach the reed. Grab the warp in small groups behind the reed and jiggle the knots through the reed. Turn the crank again until the knots reach the heddles, and jiggle them in groups through the heddles. After this point, you can wind the warp on as usual.

### Fulling Shetland yarns

Shetland yarns feel a bit stiff on the cone. The spinning oils that cause this stiffness make the yarns easy to use for weaving, adding strength and preventing stickiness. Washing the finished pieces removes the oils so that the yarns bloom beautifully, becoming soft, fuzzy, and very lofty.



## STEPS FOR WEAVING THE SCARVES

**Step 1** Wind a warp of 84 ends Garnet (or other color) 5 yd long. Use your preferred method to warp the loom following Figure 1 and the directions in the Project at-a-Glance (see Resources at [handwovemagazine.com](http://handwovemagazine.com) for complete warping steps).

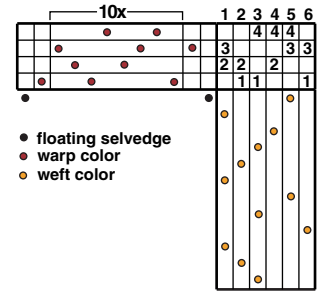
**Step 2** Allowing 6" for fringe including the amount used to tie on, weave the first scarf for 65" following Figure 1 in a selected weft color. I found it easiest to remember the treadling if I divided it into two parts: 5-1-4-3-2-1; and then 5-3-6-1-2-3. I stopped only at the end of one of these sets and could keep track of which one by checking to see if the last pick was a 1 or a 3. Because the fabric is very open (in order for fulling to be sufficiently effective), it is hard to recognize mistakes in the woven cloth. Take care to unweave if you suspect an error; it will show up when the fabric is full.

Weave the second scarf using a different weft color and allow 12" between scarves for fringe.

**Step 3** Remove the fabric from the loom and cut scarves apart allowing 6" for fringe at each end of each scarf. Prepare a twisted fringe: For the same mix of colors as in the scarf, to each group of 6 warp ends, add 4 strands of the weft yarn (thread 1 strand in a needle with a needle-threader and take the doubled strand through the cloth at the edge). Twist the warp group first to secure the weft at the edge, twist the added group in the same direction, and then twist the two together in the opposite direction and secure with an overhand knot.

**Step 4** Tie a new warp to the old one following the directions in *Beginner's Corner, Handwoven*, November/December 2007, pp. 14-15, to weave more scarves.

### 1. Draft for scarves



**Step 5** To wash scarves: To ensure regular fulling along the length of the scarf, tie the fringes of each scarf together at the ends (I used a strand of the yarn and tied it around overhand knots to join). Machine wash, cold water, with a small amount of Orvus Paste. After 4 min agitation, check degree of fulling every minute. When scarf width is about 6", remove and rinse by hand. Roll in towels to squeeze out excess water. Lay flat to dry. Trim fringe to 3-4".



c. Weave at an open sett of 10 ppi.



e. Add the weft color to the warp fringe.



e. Tie the fringes together for wet-finishing.

## PROJECT AT-A-GLANCE

**Weave structure for scarves**  
Plaited twill.

### Equipment

4-shaft loom, 9" weaving width; 10-dent reed; 1 shuttle; tapestry needle; threader.

### Yarns

Warp: 2-ply wool (1,800 yd/lb), 420 yd (3¾ oz), Garnet for scarf at right on page 2, Peacock for scarf at left.  
Weft: 2-ply wool (1,800 yd/lb), 167 yd

(1½ oz) each scarf, Gold for scarf at right on page 2, Plum for scarf at left.

### Yarn sources

Harrisville Shetland by Harrisville Designs is available from most weaving retailers. (See colors at [www.harrisville.com](http://www.harrisville.com).)

### Warp order and length

84 ends (includes 2 floating selvages) 5 yd long (allows 6" for take-up, 42" for loom waste; loom waste includes fringe).

Allow 80" for each additional scarf.

### Warp and weft spacing

Warp: 10 epi (1/dent in a 10-dent reed).  
Width in the reed: 8½".  
Weft: 10 ppi. Woven length (measured under tension on the loom): 65" per scarf; allow 12" for fringe between scarves.

### Finished dimensions

Amounts produce two scarves 6" x 58" each with 3½" fringe on both ends.