

Fabric Forecast

Fall/Winter '04-'05

Eyelash Duster

DARYL LANCASTER

Jane Ellis's unusual eyelash weave would be perfect as the accent fabric in the long duster from Purrfection Artistic Wearables (pattern #1002, www.purrfection.com). The draft is a 4-shaft plain weave with weft floats that are cut on the loom to make colorful Crayon Bright eyelashes!

The use of this fabric for the long Duster coat is a designer's educated guess at a great match. If you try it, let us know your results. The eyelash fabric is definitely ideal for the accent fabric in an outerwear garment (collar, cuffs, inset panels)—it is textured, interesting, colorful, and sturdy. The pattern weft that forms the eyelashes is actually a bundle of many yarns—ten strands in this example—and therefore a great way to use up odd bits of pearl cotton and also to play with combinations of many colors.

To weave enough eyelash fabric for the coat (a commercial fabric is suggested for the side panels, collar, and sleeves or you can use an appropriate handwoven), wind a warp of 586 ends 4½ yards long following Project at-a-glance, page 2, and thread the loom following Figure 1.

Weaving

Wind a boat-shuttle bobbin with black 10/2 pearl cotton, and wind the bundle of Crayon Brights pattern-weft yarns together onto a stick or ski shuttle. Weave the fabric for 130" following the treadling in Figure 1.

As you weave, with a pair of small, sharp scissors, cut the pattern-weft floats while the fabric is under tension on the loom every 2–3" (see the cutting lines in Figure 1), being careful not to cut the ground cloth underneath the floats. To help keep the fabric stable as you go, do not cut the weft floats right at the selvages or those within 1" of the fell (always cut below this section). Keep the beat relatively firm so that the floats will be secure.

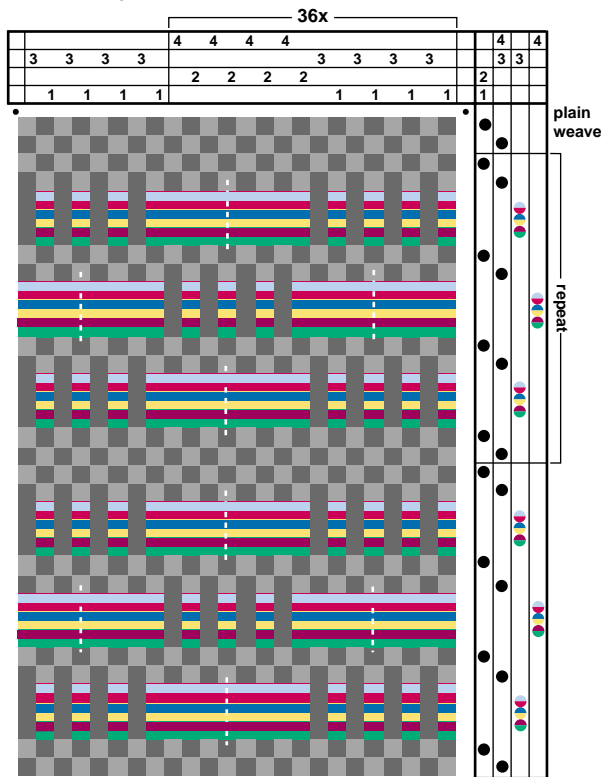
The Crayon Brights eyelash fabric is woven by Jane Ellis using a draft designed by Deborah Harrison.



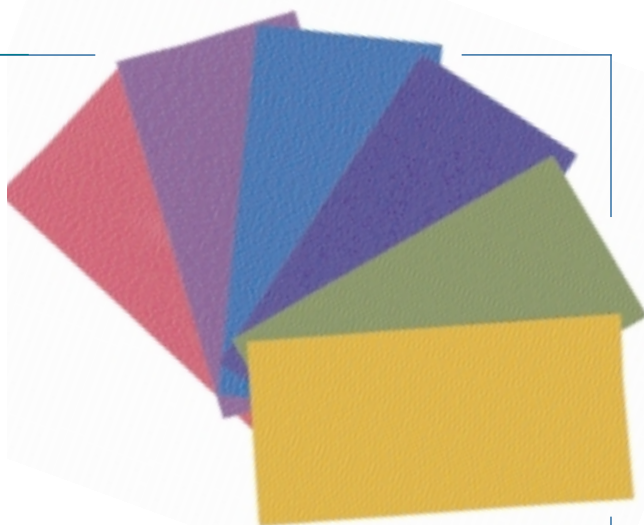
ILLUSTRATIONS BY JESSICA LEVINSON

CRAYON BRIGHTS

1. Draft for eyelash fabric



White dashed lines indicate cutting lines.
 • floating selvages ● eyelash pattern weft bundle
 ● 10/2 ground weft ●



Finishing

Remove the fabric from the loom and machine wash in warm water on a gentle cycle. Tumble dry, low, and remove from the dryer while still slightly damp. Lay the fabric with eyelash side down on a towel and steam press with the iron on a cotton setting.

Cut, assemble, and sew the duster

Cut, assemble, and sew the duster following the directions in the pattern using the eyelash fabric for the front and back center panels.

PROJECT at-a-glance

Weave structure

Cut supplementary-weft floats on a plain-weave ground (“eyelash” fabric). Use the eyelash fabric for the center front and back panels of the long duster and construct the rest of the garment from a coordinating fabric. The instructions given here are for the eyelash fabric only.

Equipment

4-shaft loom, 25" weaving width; 12-dent reed; 1 boat shuttle for background weft; 1 stick or ski shuttle for pattern weft; small sharp scissors.

Yarns

Warp: 10/2 pearl cotton (4,200 yd/lb), black, 2,637 yd (10¹/₁₆ oz).
 Ground weft: 10/2 pearl cotton (4,200 yd/lb), black, 1,557 yd (6 oz).
 Pattern weft: bundles of 10/2 and 20/2

pearl cotton in bright primary and secondary “crayon bright” colors, about 780 yd (3 oz of 10/2 cotton and 1¹/₂ oz of 20/2 cotton) needed for each strand in the bundle. The pattern weft in this fabric contains 3 strands of 10/2 cotton and 7 strands of 20/2 cotton.

Notions

Purrfection pattern #1002, To Dye For Duster (one size); 3¹/₂ yd 45"-wide cotton twill or denim fabric for the rest of the duster; 1¹/₂ yd interfacing; ¾" raglan shoulder pads; matching sewing thread.

Yarn and pattern sources

10/2 and 20/2 pearl cottons are available from most weaving retailers. Medium- to heavy-weight cotton fabrics, interfacing, shoulder pads,

and other sewing notions are available from fabric stores. Purrfection Artistic Wearables patterns are available at www.purrfection.com.

Warp order and length

586 ends (includes 2 ends for floating selvages) 4¹/₂ yd long (allows 32" for loom waste and take-up).

Warp and weft spacing

Warp: 24 epi (2/dent in a 12-dent reed). Width in the reed: 24¹/₂".
 Weft: 24 ppi (16 ppi ground weft; 8 ppi pattern weft). Woven length (measured under tension on the loom): 130".

Finished dimensions

After washing, amounts produce a length of yardage 21¹/₂" × 110" (about 15% shrinkage).