

Fabric Forecast

Fall/Winter '04-'05



FALL
HARVEST



Summer-and-Winter Vest

DIANNE TOTTEN

In this fabric, a sequence of four colors alternates with a background color in the warp. When the pattern weft floats on the back of the fabric, the warp colors show. When it floats on the face, the colors seem to disappear. Coordinating beads are prestrung on the tabby weft in selected places to look like small bubbles rising up in the columns of color.

The vest pattern is by Lois Ericson (pattern #327, www.designandsew.com). The fabric strip that trims the neck and front opening is woven on a separate all-purple warp with a black tabby weft and maroon pattern weft.

To weave the striped vest fabric, wind a warp and prepare the loom following Figures 1, 2, and Project at-a-glance.

Weaving the vest fabric

Weave the vest fabric following the treadling in Figure 2 and the fabric plan in Figure 4. Figure 4 shows how many inches to weave each section using treadling A, B, or C. To add beads (make sure holes are large enough to be threaded with 20/2 cotton), use the vest front pattern pieces as a cartoon to guide bead placement. Wind a bobbin, thread the weft tail through a beading needle, and string the beads onto it. Place beads as desired, sliding unused beads back along the weft to use in subsequent rows; restring if you need more beads.

Weaving the fabric strip for the trim

Wind a warp, prepare the loom, and weave following Project at-a-glance and Figure 3.

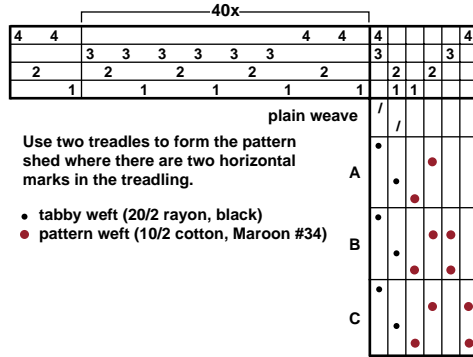
Finishing

Machine stitch raw edges of both fabrics. Wash by hand in warm water with Ivory liquid. Roll in a towel to remove excess moisture. Iron while still damp (place the beaded area face down) on a terry towel.

Cutting, assembling, and sewing the vest

Follow pattern instructions to cut, sew, and assemble the vest. Ann Doherty made two 15" kumihimo braids from multiple strands of purple and maroon for the ties for this vest. Any braiding technique that produces a round cord about $\frac{3}{8}$ " in diameter will work equally well.

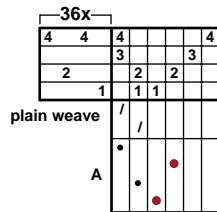
2. Draft for vest fabric



1. Warp color order for vest fabric



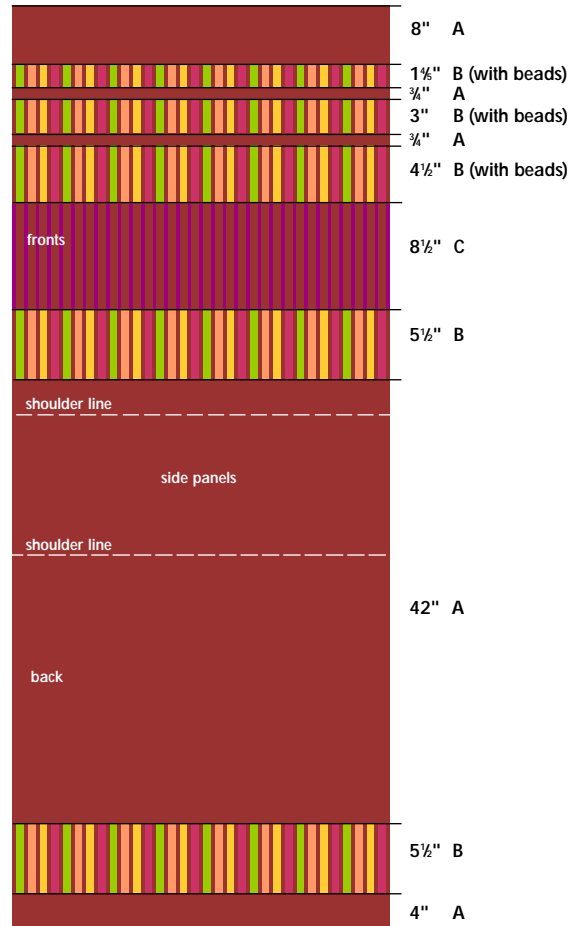
3. Draft for trim fabric



- tabby weft (20/2 rayon, black)
- pattern weft (10/2 cotton, Maroon #34)

4. Fabric plan for vest pieces

Use the treadling section indicated (A, B, or C) for the number of inches given.



PROJECT at-a-glance

Weave structure for vest fabric

Summer and winter.

Equipment

4-shaft loom, 27" weaving width; 12-dent reed; 2 shuttles; beading needle.

Yarns

Warp: 10/2 pearl cotton (4,200 yd/lb), Purple #27, 492 yd (1½ oz); Raisin #143, Antique #30 (gold), Peach #115, and Scarab #53 (green), 360 yd (1½ oz) each.

Tabby weft: 20/2 rayon (8,400 yd/lb), Black, 1,383 yd (2½ oz).

Pattern weft: 10/2 pearl cotton, Maroon #34, 1,383 yd (5½ oz).

Notions

Faience or other beads in assorted coordinating colors; Design and Sew Kimono Encore pattern #327 by Lois Ericson; lining fabric and notions required by pattern.

Yarn, bead, and pattern sources

UKI 10/2 pearl cotton and 20/2 rayon are available from most weaving retailers, faience beads from most bead shops, Design and Sew patterns from www.designandsew.com.

Warp order and length

644 ends 3 yd long following Figure 1 (allows 24" take-up and loom waste).

Warp and weft spacing

Warp: 24 epi (2/dent in a 12-dent reed). Width in the reed: 26⅝".

Weft: 20 ppi pattern/20 ppi tabby. Woven length (measured under tension on the loom): 84⅜".

Weave structure for trim fabric strip

Summer and winter.

Equipment

4-shaft loom, 6" weaving width; 12-dent reed; 2 shuttles.

Yarns

Warp: 10/2 pearl cotton (4,200 yd/lb), Purple #27, 432 yd (1½ oz).

Tabby weft: 20/2 rayon (8,400 yd/lb), Black, 308 yd (1½ oz).

Pattern weft: 10/2 pearl cotton, Maroon #34, 308 yd (¾ oz).

Warp order and length

144 ends 3 yd long (allows 24" loom waste and take-up).

Warp and weft spacing

Warp: 24 epi (2/dent in a 12-dent reed). Width in the reed: 6".

Weft: 20 ppi pattern/20 ppi tabby weft. Woven length (measured under tension on the loom): 83⅜".

Finished dimensions

After washing, amounts produce one length of yardage for vest, 26" × 77", and one strip for trim, 5½" × 72".