

Fabric Forecast

Fall/Winter '04-'05

Waffle-Weave Vest

DIANNE TOTTEN



This vest fabric uses the Crayon Brights palette in an unusual variation of waffle weave. Instead of the usual waffle-weave cells, in this fabric several strands of a thick variegated weft make a ribbon-like textured stripe in the weft direction. The vest pattern pieces are cut so that these "ribbons" are placed on the diagonal in the yokes but along the vertical in the main body pieces. The collar has a scalloped edge because of the way warp yarns are needle-woven back into the cloth.

To weave the Crayon Brights waffle-weave vest fabric, wind a warp of 317 ends 3½ yards long (see Project at-a-glance, page 2). Since many adjustments were made to this vest pattern, you may want to choose a different one. When you are calculating warp width and fabric length with this lofty, elastic merino yarn, allow at least 18% for take-up and shrinkage. Thread the loom and weave the fabric following Figures 1 and 2.

Finishing

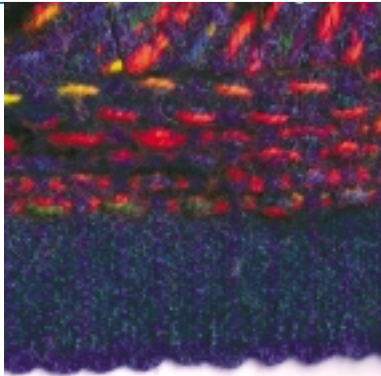
Cut the fabric from the loom. Working on the end of the warp with the plain-weave area, weave pairs of cut warp threads back into the web with a tapestry needle to secure and finish the edge. Every ½", work one pair further into the web than the others to make scallops (see Photo a). Secure the other end of the yardage with machine stitching. Hand wash in warm water with Ivory liquid. Rinse thoroughly and then spin partly dry on the gentle cycle of the washing machine. Press until completely dry using a press cloth between the iron and the fabric.

Cutting, assembling, and sewing the vest

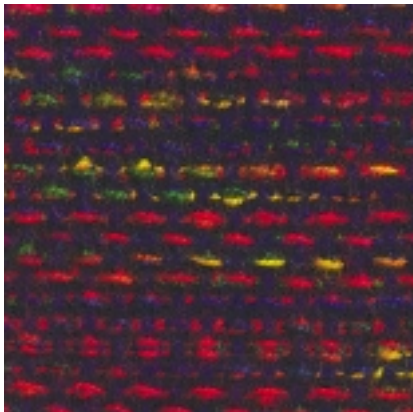
Cut and sew the vest following Figure 4 and Pattern Adjustments, page 3, if you are using McCall's pattern #4227. Except for the collar and the front yokes (which are laid out on the bias), the pieces are laid out on the cross grain of the fabric. One selvedge forms the bottom edge of the vest; no hem is used. The body of the vest is lined. The collar is formed of a single layer of fabric, and the zipper tape on the wrong side of the collar is covered with a matching binding made of the same fabric as the collar.

CRAYON
BRIGHTS





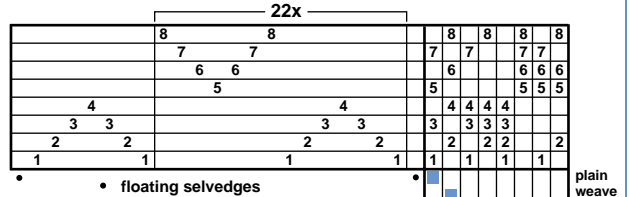
a. Warp threads are needle-woven into the web to scallop the collar's outer edge.



b. The variegated wefts compress together to appear as a single multicolored ribbon of yarn (note that there are more picks per inch than ends per inch).

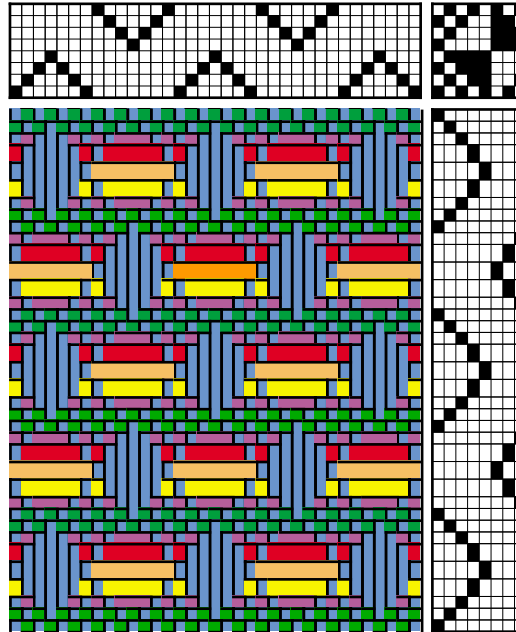
1. Draft for vest

Begin by weaving collar:
6 picks plain weave with blue;
5" plain weave with green.
Weave the rest of the warp
following the pattern repeat.
End with the balance.



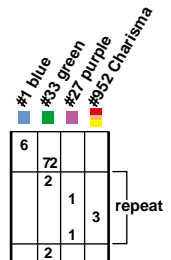
- floating selvages
- Featherlight Merino, blue #1
- Featherlight Merino, green #33
- Featherlight Merino, purple #27
- Charisma, variegated #952

2. Drawdown



This variation of waffle weave is from Diane Kelly, "Playing with Waffle," *Weaver's*, Issue 36, page 38.

3. Weft color order



PROJECT at-a-glance

Weave structure

Waffle weave variation.

Equipment

8-shaft loom, 27" weaving width;
12-dent reed; 3 shuttles, 4 bobbins;
tapestry needle.

Yarns

Warp: 12/2 worsted-spun merino wool
(3,200 yd/lb, Featherlight Merino,
Item 156), blue #1, 1,110 yd
(5½ oz).

Weft: 12/2 worsted-spun merino wool
(3,200 yd/lb, Featherlight Merino,
Item 156), blue #1, 5 yd; purple #27,
282 yd (1½ oz); green #33, 342 yd
(1½ oz). 100% Aran-weight worsted
wool (873 yd/lb, Valley Yarns
Charisma), #952 (variegated red,

blue, purple, and gold), 423 yd
(7¼ oz).

Notions

Vest pattern such as McCall's #4227,
Misses'/Men's Unlined Vest, size
small. Interfacing for neck and sleeves
as required by pattern, lining fabric,
separating zipper, sewing thread. Pat-
tern tracing paper to adjust pattern.

Yarn sources

Featherlight Merino is available from
Halcyon Yarn in 1 lb cones and 400
yd minicones. Valley Yarns Charisma
is available from Webs in 385 yd (7
oz/200 gm) skeins.

Warp order and length

317 ends (includes 2 ends for floating
selvages) blue Featherlight Merino

3½ yd long (allows 8" take-up and 36"
loom waste).

Warp and weft spacing

Warp: 12 epi (1/dent in a 12-dent
reed). Width in the reed: 26½".
(For a longer vest, add to warp
width, allowing about 18% for
take-up and shrinkage.)

Weft: 16 ppi. Woven length
(measured under tension on the
loom): 5" plain weave for collar
and 76" waffle weave for vest body.

Finished dimensions

After washing, amounts produce a
length of yardage 21½" × 70", enough
for a small-size vest (41" at bust, 20"
back length measurement). Take-up
and shrinkage are about 18%.

Pattern adjustments

You can choose any vest pattern for this waffle-weave fabric, but you'll need to make the following adjustments to McCall's #4227, view C, size small, for the vest on page 1.

1. Trace the pattern pieces for the vest front and back so that you have two fronts and one full back.
2. Measuring from the top of the shoulder to the bottom of the front and back pattern pieces, mark a new hem cutting line at a point that is 1" longer than the width of your finished fabric. (The vest hemline is the selvedge.; the extra 1" is for a hem allowance in the lining pieces.)
3. To create separate yoke and lower front pieces, on each front piece measure and mark a point on the side seam 1½" below the armhole and then draw a line from this mark to the center front opening, parallel to the bottom hemline; for bust ease, slightly curve this line. This is the seam line.
4. To make the yoke pattern piece, draw a second line ⅝" below this new seam line on one of the front pieces, cut along this line, and discard the pattern piece below it.
5. To make the lower front pattern piece, on the other full front piece, draw a cutting line ⅝" above the newly marked

seamline. Cut along this line and discard the pattern piece above it.

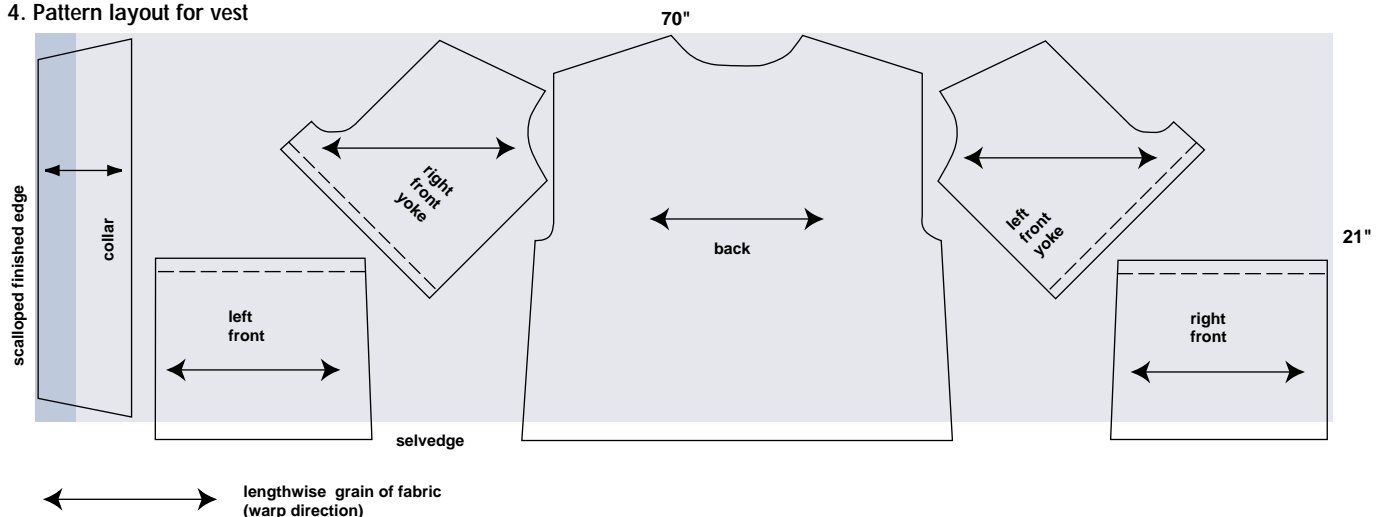
6. The vest back and the lower fronts are laid out on the cross grain of the fabric; i.e., the warp runs horizontally. Redraw the grain lines on the lower front and on the back so that they run parallel to the hemline.
7. The yokes are cut on the bias of the fabric so that the weft stripes form a chevron at the center front. Draw a 45-degree line as shown in the pattern layout. For the chevron to form correctly, the bias line should extend from the neck opening down to the base of the armhole.
8. Make copies of the yoke and lower front if you want to lay out all pieces (as in Figure 4) before cutting.
9. The collar is cut as a single layer on the straight grain of the fabric; the scalloped edge is the outer edge of the collar. Because this fabric is so flexible, the pattern for the collar does not need to curve as it does in the commercial pattern piece. To make the collar pattern, measure the longest side of the collar piece, and double the length (the pattern piece is designed to be placed on a fold). Draw a line this length for the edge of the collar that is sewn to the vest. Next, mea-

sure the height of the collar and subtract ⅝" to remove the seam allowance from the outer edge (the collar is a single layer with a finished edge; no seam or hem allowance is necessary for this edge). Draw a parallel line this distance away from the first line. Mark the second line 1" shorter on each side than the first line. Connect the ends of the two lines; see Figure 4.

Layout and assembly

1. Lay out the pattern as shown in Figure 4, and cut out the pieces. Note that the lower edges of the fronts and the back extend 1" beyond one selvedge since no hem is required.
2. Cut out yokes, fronts, and back pieces from the lining fabric (include hem allowance).
3. Stitch the yokes and lower fronts together to make single front pieces.
4. Assemble the vest and insert the zipper as directed in the pattern. Instead of turning in the seam allowance at the armholes, use the lining to face the armholes and to enclose the raw edges at the neckline and center front.
5. Fold up the lining hem and catch-stitch to the vest fabric about 1" above the selvedge edge, allowing the lining to form a ½" pleat for wearing ease.

4. Pattern layout for vest



Lay out so that bottom edges of pattern pieces extend 1" beyond selvedge; the selvedge forms the bottom edge of the garment. When you are cutting out the lining pieces, use the complete pattern pieces including the hems.