

Computer weaving software: using WIF files

JUDIE EATOUGH

WIF files are text files that contain all the information necessary to allow a draft to be transferred from one weaving software program to another. The developers of WIF version 1.0, released March 3, 1996, were Ravi Nielsen (*Patternland Weave Simulator*), Bob Keates (*Fiberworks PCW*), and Rob Sinkler (*SwiftWeave*). WIF version 1.1, released April 20, 1997, is the result of additional collaboration among an expanded group of programmers. In addition to the original three, contributors were Sally Breckenridge (*WeaveIt*), Dana Cartwright (*WeaveMaker*), Jane Eisenstein (*Q-WDF*), Mark Kloosterman (*Proweave*), and Bjorn Myhre, (*WeavePoint*).

Not all features can be translated into every program, but all of the programs support the threading, tie-up (or lift plan), and treadling parts of a draft. Some support colors and warp and weft thickness. To find out what your weaving software supports, try downloading the WIF files included with this article and others on the HANDWOVEN website.

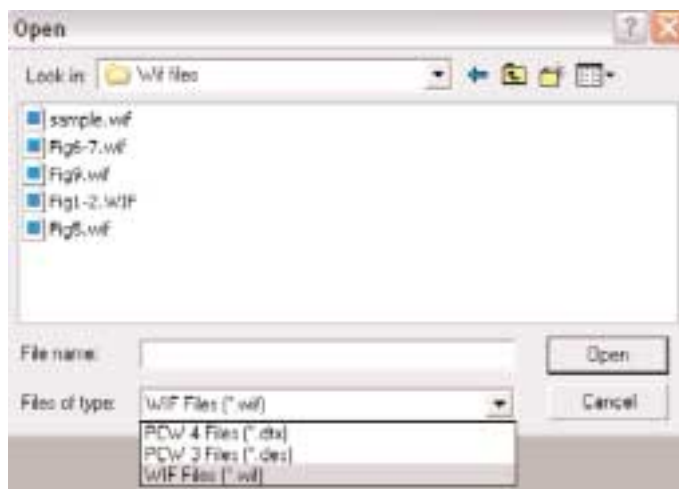
1. To save a WIF file to disk, use the right mouse button to open a window that includes the Save option.



Downloading a WIF file

To use a WIF file, first save it to your hard drive. The method you use to do this will depend on your system and your internet browser. Save the file in a folder where you can find it later. Practice by seeing if you can download WIF files from HANDWOVEN.

2. Selecting "Files of type" in *Fiberworks PCW*



3. Selecting "Files of type" in *ProWeave*

