

# Turned Rosepath Rug

## for a dollhouse

MIMI SMITH

Before you start this rug, be sure to read pages 66–69 in *Handwoven*, September/October 2005, for a description of turned rosepath. I found a sample of this weave in *Rug Weaving for Everyone* (see Resources) and wove the rug shown here for my daughter's dollhouse. Whether you weave the full-size rug in the magazine article or the dollhouse rug shown here, you'll probably want to design and weave more in this structure!

### STEPS FOR WEAVING THE DOLLHOUSE RUG IN TURNED ROSEPATH

**Step 1** These directions are for warping from back to front using a raddle instead of lease sticks for beaming. (Fine wools wind on the warp beam more easily if they go through the raddle only.) Wind a warp of 368 ends 1 yd long with two crosses, a threading cross and a raddle cross, following the color order in Figure 2. For the raddle cross, divide the warp threads into groups that will fit in your raddle sections (for example, 30 ends per section for a raddle with 1/2" spaces).

When color changes are needed, cut the old color at one of the end pegs and tie the new color to the end of the old one. Where alternating colors are used, cut the old color (even if it is one of the alternating colors) and tie the two colors onto the cut end to wind 2 threads at a time, keeping a finger between them. To return to winding 1 end at a time, cut the 2

threads and tie the new thread to both of the cut ends with an overhand knot.


Secure the crosses with ties, and tie one choke tie in front of the threading cross. Do not cut the warp loops nearest the raddle cross.

**Step 2** Insert a rod through the loops near the raddle cross and spread the warp in the raddle, centering for a width of 6 1/2". Secure the rod to the warp beam apron rod. Beam the warp under very even but not tight tension (to avoid stretching the wool threads) until the threading cross is behind the heddles and the front of the warp clears the breast beam.

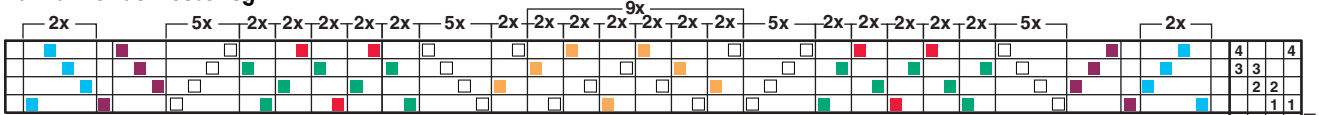
**Step 3** Place lease sticks in the threading cross and suspend them behind the shafts so that the cross aligns with the eyes of your heddles. Remove the raddle. Thread each warp thread singly through the heddles, carefully follow-

ing the threading and color orders in Figures 1 and 2. Leave 2 warp threads on each side unthreaded for floating selvedges. Sley 5 ends in each dent of a 12-dent reed. Tie the warp onto the cloth beam apron rod in 1/2" sections and weight the floating selvedges behind the back beam.

**Step 4** Wind a bobbin or stick shuttle with 4 strands of Turquoise 18/2 merino (you'll need about 30 yd of this 4-strand weft). Wind carefully, applying even tension to the threads. Then weave the rug for 10" following the treadling in Figure 1. Twist the shuttle as necessary to join the 4 strands.

**Step 5** Cut the warp from the loom and with a sewing machine sew a fine straight stitch at each end of the rug to prevent raveling. Trim the fringe evenly to 1/2" with a rotary cutter. No further finishing is necessary. 

#### 1. Draft for dollhouse rug



#### 2. Warp color order

20	10	6x	110x	6x	10	Turquoise #53		
8	4			4		Claret #60		
190	20		20	1	20	White #11		
28	4	1	4		4	1	4	Emerald #30
12		1			1		1	Garnet #2
110			1					Marigold #23
368								

Color order includes 4 threads for 2 doubled floating selvedges.

#### Heddle count

shaft 4	90
shaft 3	92
shaft 2	90
shaft 1	92
	368

floating selvedges (doubled strand of Turquoise)  
weft: 4 strands Turquoise

#### Resources

Tod, Osma, and Josephine Del Deo. *Rug Weaving for Everyone*. New York: Bramhall House, 1957. p. 87.





You can be creative with this weave! The miniature rug uses two rosepath motifs, the rose in the border and the diamonds in the center, with twill stripes separating them. Changing colors from design to design adds great interest—try alternating the designs shown here at different widths, use them in different arrangements, and/or use different colors.

## PROJECT AT-A-GLANCE

### Weave structure for dollhouse rug

Warp-faced turned rosepath.

### Equipment

4-shaft loom, 7" weaving width; 12-dent reed; a raddle, preferably with ½" or ¼" spaces; 1 boat or stick shuttle.

### Yarns

Warp: 18/2 merino wool (5,040 yd/lb, JaggerSpun Superfine Merino), Turquoise #53, 20 yd (½ oz); Claret #60, 8 yd (⅙ oz); White #11, 190 yd (⅓ oz); Emerald #30 28 yd (⅙ oz); Garnet #2, 12 yd

(⅙ oz); Marigold #23, 110 yd (⅓ oz).  
Weft: 18/2 merino wool (5,040 yd/lb, JaggerSpun Superfine Merino), 4 strands used as one, Turquoise #53, 120 total yd (⅓ oz).

### Yarn sources

JaggerSpun 18/2 Superfine Merino is available from Halcyon Yarn and other weaving retailers.

### Warp order and length

368 ends (includes 4 ends for floating selvages) 1 yd long following the color

order in Figure 2 (allows 3" for take-up, 23" for loom waste; loom waste includes fringe). Add 1 yd for every two additional rugs.

### Warp and weft spacing

Warp: 60 epi (5/dent in a 12-dent reed).

Width in the reed: 6⅛".

Weft: 15 ppi. Woven length (measured under tension on the loom): 10".

### Finished dimensions

Amounts produce one miniature rug 6" × 10" plus ½" fringe at each end.