

Evening Star Blouse

in fancy twill with metallic weft

SARA NORDLING

Here are instructions for a blouse fabric to go with your Evening Star jacket. If you have a 16-shaft loom, you can weave the jacket fabric and the blouse fabric on the same warp without rethreading. On four or eight shafts, you can also use the same warp for both fabrics, but you'll have to rethread the loom between them.

Like many weavers, I don't like to warp my loom more often than necessary, especially with a slippery yarn like rayon. It was a treat to discover that on a 16-shaft straight draw I could weave both the eyelash fabric and a fancy 16-shaft twill fabric for the blouse.

Because not all weavers have 16-shaft looms, I also designed twills on four and eight shafts that are equally appropriate for the blouse; see photos of the fabrics on page 2.

For directions on weaving the eyelash jacket fabric on three shafts and constructing the jacket, see "Evening Star Jacket," *Handwoven*, March/April 2004, pages 48–50.

Before you wind your warp, examine the pattern you have chosen to make sure the width and length of your handwoven fabrics will accommodate the pattern pieces. McCall's pattern #8155 (for a jacket and sleeveless blouse), which is no longer available, was used for these garments. A similar pattern is McCall's #4309.

Preparing the loom

To weave only the blouse fabric, wind a warp of 920 ends black 10/2 Tencel 3 yards long (see Project at-a-glance, blouse fabric, page 3) and thread the loom following Figure 1, 2, or 4a, pages 3–4). To weave both fabrics on the same

warp, wind 920 ends black 10/2 Tencel 7 yards long (see Project at-a-glance, jacket and blouse fabric, page 3). Thread the loom and weave the fabric following the draft in Figure 3a if you have a 16-shaft loom (use the peg plan in 3b if you have a dobbie) for the eyelash fabric. If you have a 4-shaft or 8-shaft loom, thread and weave the eyelash fabric following Figure 1, page 50, *Handwoven*, March/ April 2004.

Loom adjustments for weaving both fabrics on the same warp

If you are weaving both fabrics on the same warp, you will have to make some loom adjustments after weaving the eyelash fabric. On sixteen shafts, change the tie-up to the one in Figure 4a or repeg the dobbie to the peg plan in Figure 4b to weave the blouse fabric.

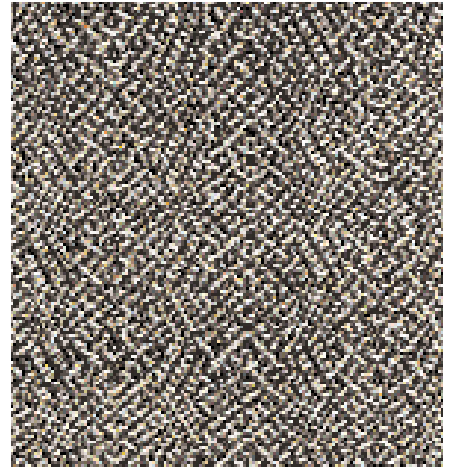
On four or eight shafts, you will need to cut off the eyelash fabric and rethread the warp following Figure 1 or 2. Before you cut, however, weave several picks of scrap yarn to secure the end of the eyelash fabric. Raise shaft 1 and insert a lease stick into the opening behind the heddles. Raise shafts 2 and 3 and insert a second lease stick into the opening between the first stick and the heddles. Fasten the ends of the lease sticks together and suspend them with cords from the castle at a comfortable position for threading. (The lease sticks will be supported by the warp as long as the warp remains under tension, but once the warp is cut, they need to be supported by cords.)

Allowing 8–10" of unwoven warp in front of the reed, now carefully cut the warp threads close to the scrap weft and remove the eyelash

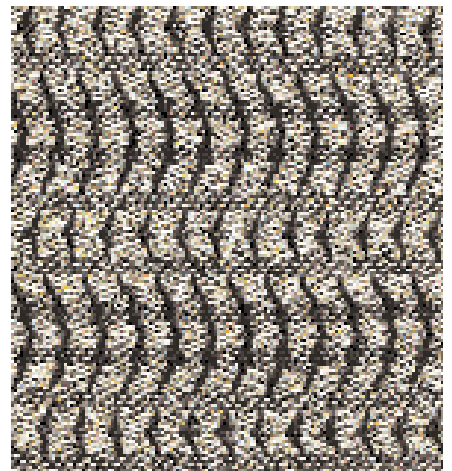


Sara Nordling, currently of Waco, Texas, enjoyed ten years of weaving and encouragement from the Duneland Weavers Guild of Indiana. She is now working for a BFA in fiber art from Baylor University.

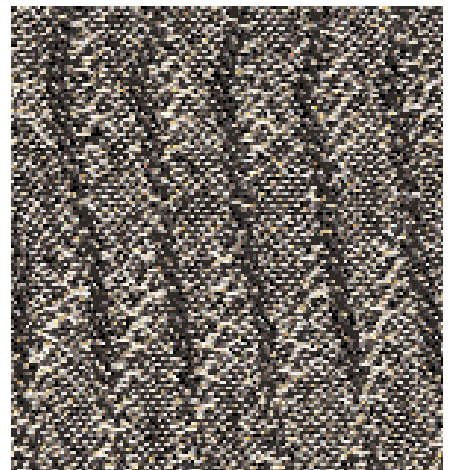




a. 4-shaft blouse fabric



b. 8-shaft blouse fabric



c. 16-shaft blouse fabric

