

TRADITIONAL MITTENS

Charming mittens reminiscent of the traditional mittens of Gotland, an island off the south eastern coast of Sweden. Featuring a small, easy-to-memorize, three-color, geometric pattern (a variation of motif 10, page 52) and a simple peasant thumb. Only every fourth round uses all three colors, making it a great first project for using more than two colors. You may duplicate stitch the third color if desired.

Make two.

With smaller needles and color A cast on 48 sts. Place 24 sts on one needle, divide the rem sts onto two needles and join without twisting. Work in k1, p1 rib for 2" (5 cm).

Increase rnd: * Rib 5 sts, M1; rep from *

8 more times; end p1, k1, p1, M1—58 sts.

Change to larger needles. Work rnds 1–8 of Chart A two times.

Thumb placement right mitt

Next rnd: K1, place foll 8 sts on stitch holder, with backward loop method, loosely cast 8 sts onto RH needle, work to end of row.

Thumb placement left mitt

Next rnd: (Rnd 1) K 20, place foll 8 sts on stitch holder, with backward loop method, loosely cast 8 sts onto RH needle, work to end of row. Work rnds 2–8 of Chart A. Work Chart A one more time.

Mitten Top Work Chart B—10 sts rem.

Combine last 5 sts onto one needle. Turn work inside out and with color A work 3-needle bind-off. Turn right side out.

Thumb Place 8 sts from stitch holder onto a double-pointed needle with color A and another needle knit across these 8 sts, with another

MATERIALS

Yarn

100% Norwegian wool (Dale of Norway, Heilo), 50 g ball = 109 yd (100 m)

- 1 ball color A, red (4018 Red)
- 1 ball color B, white (0020 Natural)
- 1 ball color C, gray (0083 Charcoal)

Needles

- set of size 4 (3.5 mm) double-pointed needles
- set of size 5 (3.75 mm) double-pointed needles

Notions

- tapestry needle
- 2 stitch holders

Gauge

25 sts and 27 rnds = 4" (10 cm) in colorwork pattern on larger needle

Finished size

Hand circumference 9¼" (23.5 cm), length 9¼" (23.5 cm)

CHART A

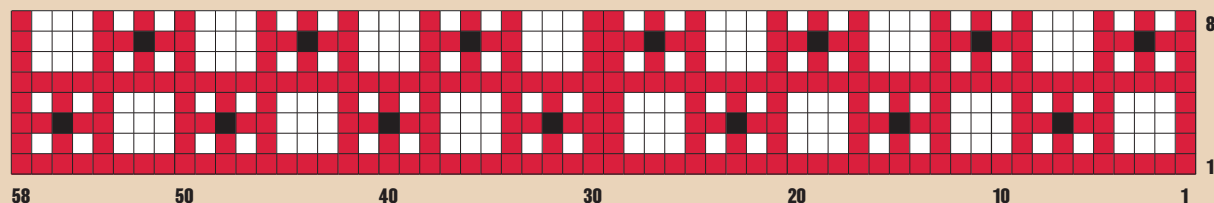
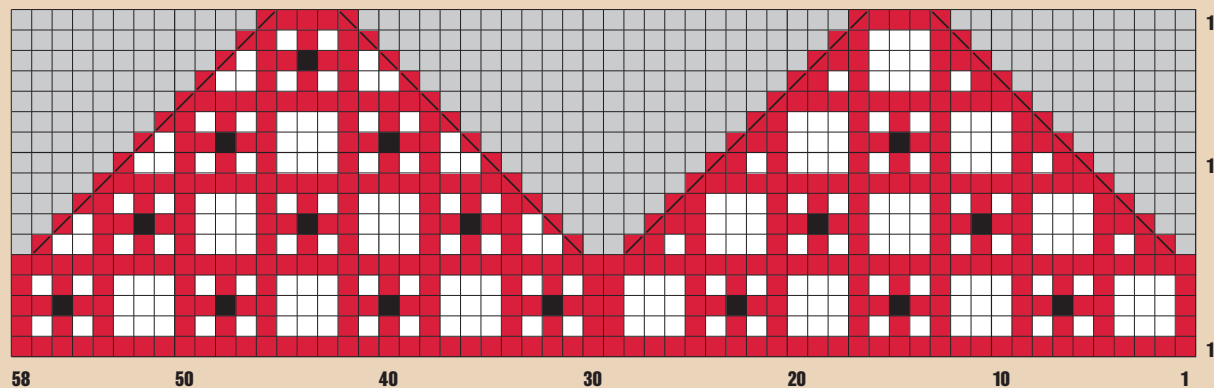


CHART B



- A
- B
- C
- no stitch
- ▤ ssk
- ▥ k2tog