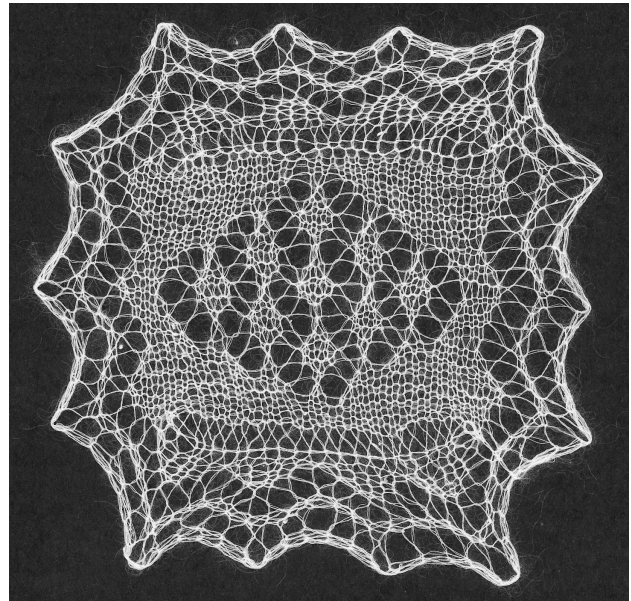
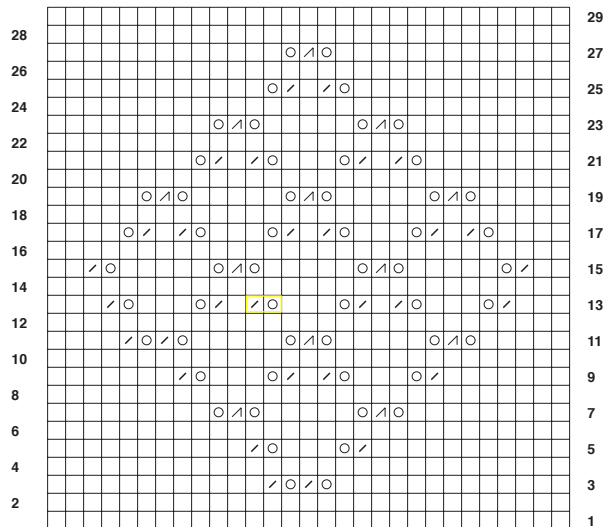
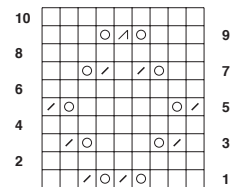


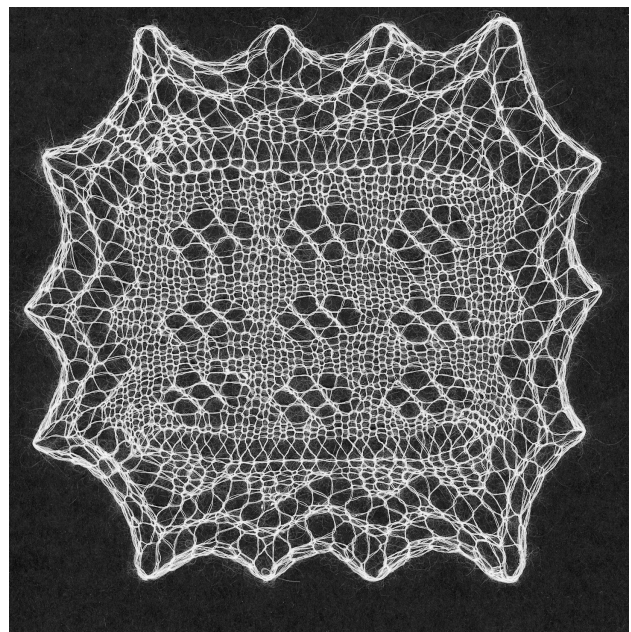
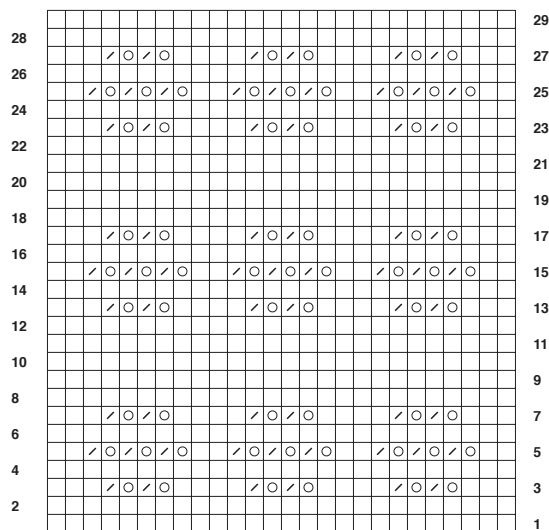
The **large strawberry** is patterned on right-side rows only; wrong-side rows are knitted. This particular configuration of large strawberries forms a diamond and is used most commonly in the frame but also as an allover pattern.



Large strawberry.



Cat's paws are patterned on right-side rows only; wrong-side rows are knitted. Cat's paws are used to fill up corners and are combined to form snowflake patterns.



Cat's paws.

