

Special Stitches

Back-twisted Tunisian simple st (Bts): Using hook to move front vertical bar to the right (this is what creates the twist), insert hook under back vertical bars and draw up lp.

Left-cross 2x2 Cable: Loosely work 2 Tks with extra hook and hold at front of work; on main body of work, loosely work 2 Tks, slide lps on extra hook to back end (away from hook), move sts to main hook one at a time.

Left-cross 2x1 Cable: Loosely work 2 Tks with extra hook and hold at front of work; loosely work Tps, slide lps on extra hook to end, move sts to main hook.

Right-cross 2x2 Cable: Loosely work 2 Tks with extra hook and hold at back of work; on main body loosely work 2 Tks, slide lps on extra hook to end, move sts to main hook.

Right-cross 2x1 Cable: Loosely work 1 Tps with extra hook and hold at back of work; on main

body loosely work 2 Tks, slide lp on extra hook to end, move sts to main hook.

Drop-down Increase (d-inc): Insert hook in front vertical bar and draw through lp; insert hook in front vertical bar of st immediately below, draw through lp and raise to height of other lps; treat each lp as a st on the return pass.

Diamond Cable st patt (worked over 14 sts)

Refer to Diagram A

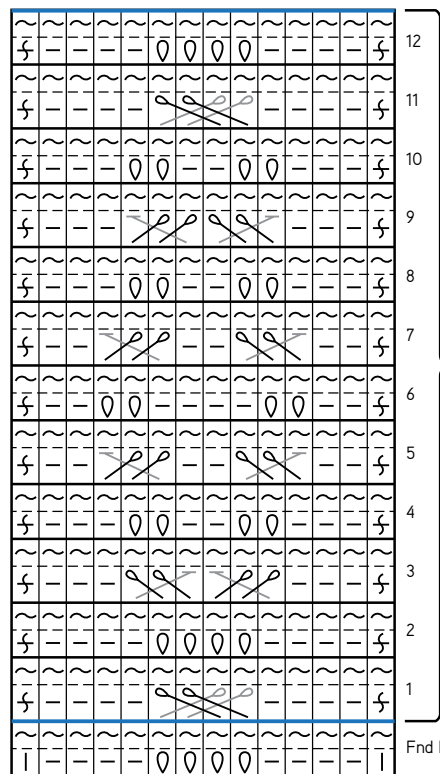
The left-cross 2x2 cable is used in Row 1 on the right side of the vest. The right-cross 2x2 cable is used in Row 1 on the left side of the vest.

Set-up Row: Tss, work 4 Tps, work 4 Tks, work 4 Tps, Tss.

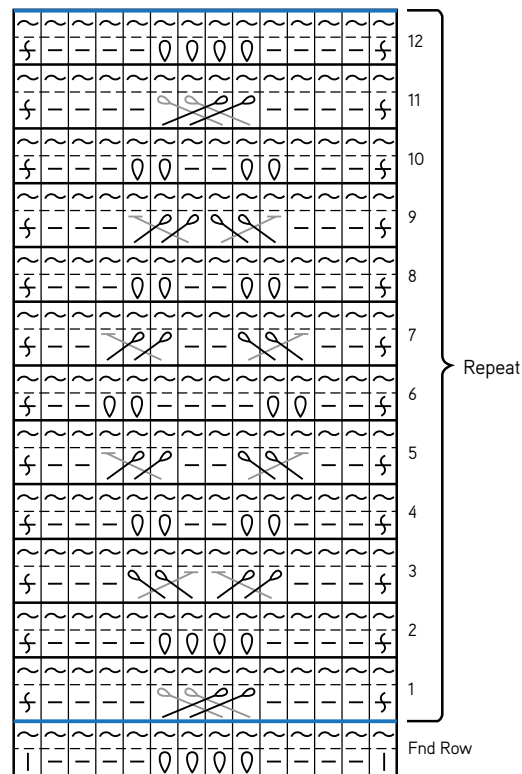
Row 1: Bts, work 4 Tps, left-cross 2x2, (right-cross 2x2 for left panel), work 4 Tps, Bts.

Row 2: Bts, work 4 Tps, work 4 Tks, work 4 Tps, Bts.

Diagram A



Diamond Cable St Pattern
Right Side



Diamond Cable St Pattern
Left Side

Row 3: Bts, work 3 Tps, right-cross 2x1, left-cross 2x1, work 3 Tps, Bts.

Row 4: Bts, work 3 Tps, work 2 Tks, Tps 2, work 2 Tks, work 3 Tps, Bts.

Row 5: Bts, work 2 Tps, right-cross 2x1, work 2 Tps 2, left-cross 2x1, work 2 Tps, Bts.

Row 6: Bts, work 2 Tps, work 2 Tks, work 4 Tps, work 2 Tks, work 2 Tps, Bts.

Row 7: Bts, work 2 Tps, left-cross 2x1, work 2 Tps, right-cross 2x1, work 2 Tps, Bts.

Row 8: Bts, work 3 Tps, work 2 Tks, work 2 Tps, work 2 Tks, work 3 Tps, Bts.

Row 9: Bts, work 3 Tps, left-cross 2x1, right-cross 2x1, work 3 Tps, Bts.

Row 10: Bts, work 4 Tps, work 4 Tks, work 4 Tps, Bts.

Row 11: Bts, work 4 Tps, left-cross 2x2, (right cross 2x2 for left panel), work 4 Tps, Bts.

Row 12: Bts, work 4Tps, work 4 Tks, work 4 Tps, Bts.

Rep Rows 1–12 for patt.

Twill Weave st patt (multiple of 3 sts)

Refer to Diagram B

Row 1: *Work 2 Tks, Tss; rep from * across.

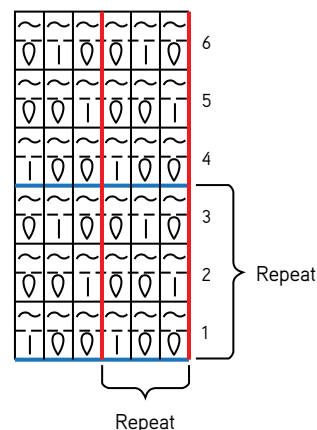
Row 2: *Tss, work 2 Tks; rep from * across.

Row 3: *Tks, Tss, Tks; rep from * across.

Rep Rows 1–3 for patt. If you are working across a group of sts that isn't a multiple of 3, ignore the last 1 or 2 missing sts.

Diagram B

Twill Weave
Stitch Pattern



FRONT

Body

Ch 68 (76, 84, 92, 100).

FOUNDATION ROW: Working in bottom bump, draw up lp in 2nd ch from hook and in each ch across—68 (76, 84, 92, 100) sts.

SET-UP ROW: Work 5 (8, 11, 14, 17) Tss, work set-up row of Diamond Cable st patt (see Special Stitches), work 28 (30, 32, 34, 36) Tss, work set-up row of Diamond Cable st patt, work 5 (8, 11, 14, 17) Tss, draw up lp in last bar.

ROW 1: Work 5 (8, 11, 14, 17) Tss, work Row 1 of Diamond Cable st patt, Left Side, work 28 (30, 32, 34, 36) Tss, work set-up row of Diamond Cable st patt, Right Side, work 5 (8, 11, 14, 17) Tss, draw up lp in last bar.

ROWS 2–46 (48, 49, 49, 51): Cont in est patt, working Tss over right, center, and left panels and starting with Row 2 of patt, work the 10 rows

