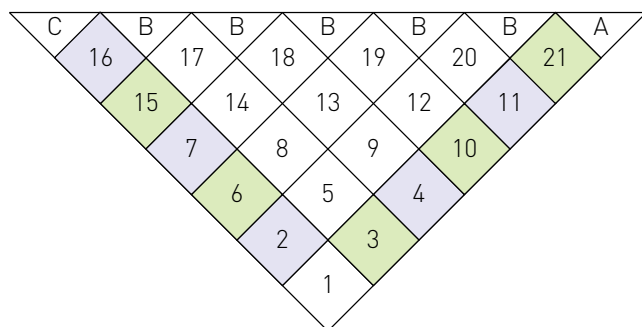


Diamond and Triangle Layout



- work following instructions for Edge Diamond A
- work following instructions for Edge Diamond B
- work following instructions for Inner Diamond

Shawl

First diamond

CO 44 sts. Place marker (pm) after 22 sts.

Row 1 and all odd-numbered rows: (WS) Purl.

Row 2: K3, [yo, ssk] to 3 sts before m, k1, ssk, sl m, k2tog, k1, [k2tog, yo] to last 3 sts, k3—2 sts dec'd.

Row 4: K3, [yo, ssk] to 2 sts before m, ssk, sl m, k2tog, [k2tog, yo] to last 3 sts, k3—2 sts dec'd.

Rep Rows 2–5 until 12 sts rem, ending after a WS row.

Next row: K3, yo, ssk, k1, sl m, k1, k2tog, yo, k3—10 sts rem.

Next row: Purl.

Next row: K3, ssk, sl m, k2tog, k3—8 sts rem.

Next row: Purl.

Next row: K2, ssk, sl m, k2tog, k2—6 sts rem.

Next row: Purl.

Next row: K1, ssk, sl m, k2tog, k1—4 sts rem.

Next row: Purl.

Next row: Ssk, sl m, k2tog—2 sts rem. BO rem sts.

Edge Diamonds

Edge Diamond A: Using knitted method, CO 22 sts, pm, pick up and knit 22 sts along one edge of previous diamond (as shown in diagram). Work as for first diamond.

Edge Diamond B: Pick up and knit 22 sts along one edge of previous diamond (as shown in diagram), pm, using knitted method, CO 22 sts. Work as for first diamond.

Follow Edge Diamond A directions for Diamonds 2, 4, 7, 11, and 16.

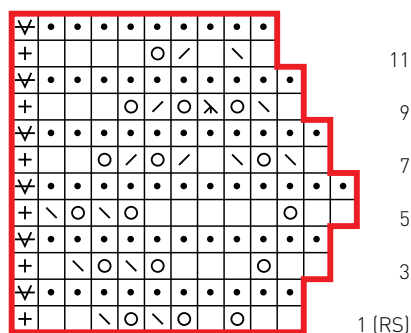
Follow Edge Diamond B directions for Diamonds 3, 6, 10, 15, and 21.

Inner Diamond

Pick up and knit 22 sts along edge of previous diamond, pm, pick up and knit 22 sts along adjacent diamond (as shown in diagram). Work as for first diamond.

Follow Inner Diamond directions for Diamonds 5, 8, 9, 12–14, and 17–20. If desired, add more rows of diamonds for the desired size.

Lace Edging



- knit on RS; purl on WS
- purl on RS; knit on WS
- yo
- \ ssk
- / k2tog
- X sl 1, k2tog, psso
- + knit into st and edge to join
- V sl 1 wyf on RS; sl 1 wyb on WS
- pattern repeat

Top Triangles

Triangle A: Using knitted method, CO 22 sts, pick up and knit 22 sts along edge of Diamond 21, pm. Work as for First Diamond until 22 sts rem. Sl rem sts to holder or scrap yarn.

Triangle B: Pick up and knit 22 sts along each of two adjacent diamonds (as for Inner Diamond), pm. Work as for First Diamond until 22 sts rem. Sl rem sts to holder or scrap yarn. Repeat for remaining 4 spaces between 2 diamonds along top edge.

Triangle C: Pick up and knit 22 sts along edge of Diamond 16, pm, using knitted method, CO 22 sts. Work as for First Diamond until 22 sts rem. Sl rem sts to holder or scrap yarn.

Finishing Crochet edging

With crochet hook, attach yarn to first st at top right edge of shawl. Ch 2, [sc 1 in next st, ch 1] to end, sc in last st. Cut yarn and draw tail through last st to fasten off.

Lace edging

CO 10 sts.

Row 1: (RS) K2, yo, k1, [yo, ssk] twice, k2, k tog last st and edge of shawl—11 sts.

Row 2 and all even-numbered rows: (WS) Sl 1 wyf, knit to end.

Row 3: K2, yo, k3, [yo, ssk] twice, k1, k tog last st and edge of shawl—12 sts.

Row 5: K2, yo, k5, [yo, ssk] twice, k tog last st and edge of shawl—13 sts.

Row 7: K1, ssk, yo, ssk, k1, [k2tog, yo] twice, k2, k tog last st and edge of shawl—12 sts.

Row 9: K1, ssk, yo, sl 1, k2tog, psso, yo, k2tog, yo, k3, k tog last st and edge of shawl—11 sts.

Row 11: K1, ssk, k1, k2tog, yo, k4, knit tog last st and edge of shawl—10 sts. Rep Rows 1–12 for the pattern from top left corner to the point (see note above) and back up to the top right corner, ending with Row 12.

Bind off loosely. Use tapestry needle to weave in ends. Block.